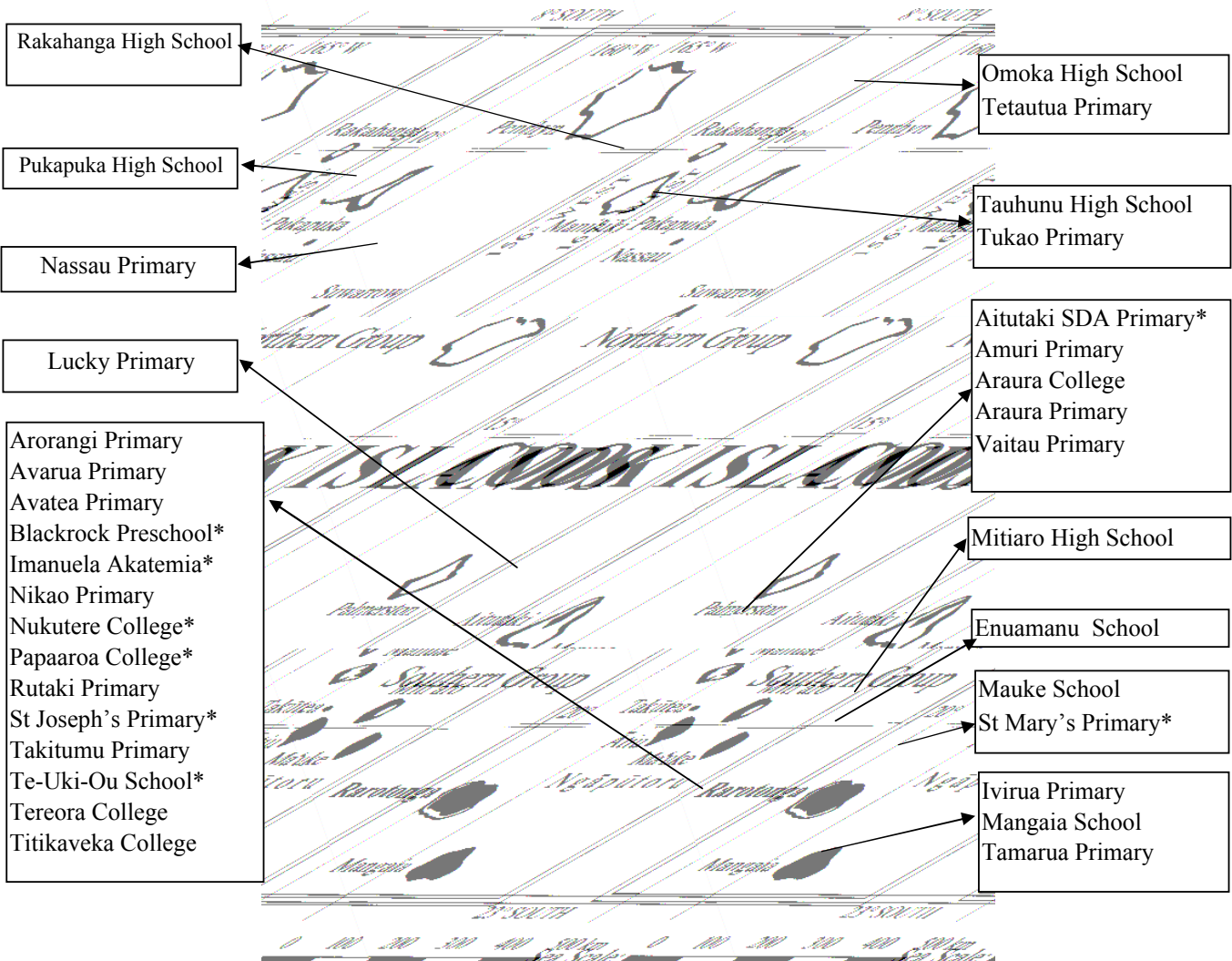


# COOK ISLANDS SCHOOLS

## DISTRIBUTION OF SCHOOLS

The Cook Islands consists of 15 islands. Rarotonga is the main island in terms of population and economic activity. The Southern Group, which excludes Rarotonga in this digest, consists of 7 islands, 2 of which (Manuae and Takutea) are not permanently populated. The least populated region is the Northern Group. The group consists of 7 islands with only Suvarrow lacking a permanent population. Schools are established on all 12 permanently populated islands. All of the 34 schools in the Cook Islands are co-educational. There are 14 schools on Rarotonga, 12 in the Southern Group and 8 in the Northern Group. The total number of schools remains the same as in 2000. However Uturei SDA School (Atiu) was closed down due to insufficient enrolment and Lucky School in Palmerston reopened after having been destroyed by fire in 1999.

## MAP OF COOK ISLANDS SCHOOLS



\*Church or Private Schools

## STATUS OF SCHOOLS

The Government has established schools on all twelve permanently inhabited islands. "Private " is used to denote a non-government school neither owned nor operated by a religious organisation. The two private schools, Blackrock Preschool and Te-Uki-Ou Primary, are located on Rarotonga. There are also four Church schools on Rarotonga. Two are administered by the Catholic Church (St Joseph's and Nukutere), one by the Seventh Day Adventist Church (Papaaroa) and one by the Assembly Of God Church (Imanuela Akatemia). The Catholic Church also administers a primary school (St Mary's) on Mauke and the SDA Church administers a primary school (Aitutaki SDA) on Aitutaki.

## STATUS OF SCHOOLS BY REGION

Status	Rarotonga	Southern Grp	Northern Grp	Total
Government	8	10	8	26
Church	4	2	0	6
Private	2	0	0	2
<b>Total</b>	<b>14</b>	<b>12</b>	<b>8</b>	<b>34</b>

## TEACHERS AND STUDENTS BY SCHOOL STATUS

Status	Schools	Teachers			Students			P-T Ratio
		Male	Female	Total	Male	Female	Total	
Church	6	11	27	38	294	227	521	14
Government	26	71	166	237	2050	1920	3970	17
Private	2	0	12	12	86	80	166	14
<b>Total</b>	<b>34</b>	<b>82</b>	<b>205</b>	<b>287</b>	<b>2430</b>	<b>2227</b>	<b>4657</b>	<b>16</b>

## STUDENT : SCHOOL RATIOS BY ISLAND

Island	Schools	Students	Student/Sch
Aitutaki	5	642	128
Atiu	1	196	196
Mangaia	3	266	89
Manihiki	2	129	65
Mauke	2	189	95
Mitiaro	1	68	68
Nassau	1	38	38
Palmerston	1	9	9
Penrhyn	2	124	62
Pukapuka	1	249	249
Rakahanga	1	38	38
Rarotonga	14	2709	194
<b>Total</b>	<b>34</b>	<b>4657</b>	<b>137</b>

Geographical isolation is the reason for the low student : school ratio on Manihiki and Penrhyn; each island having 2 schools serving communities separated by a wide lagoon. The student : school ratio on Mangaia is low due to 2 extra small primary schools. The ratio on Mauke is low due to a church school as well as a government school both operating on the island.

## LEVELS OF SCHOOL

**PRE-SCHOOL** students are children aged from 3 years 6 months up to 4 years 11 months inclusive who are voluntarily enrolled for pre-school instruction.

**PRIMARY** students are children who are enrolled for instruction at Grade 1 - 6 level. Attendance is compulsory from the age of 5. The expected age range is from 5 to 10 years if a child spends one year in each grade.

**SECONDARY** students are children and young adults who are enrolled for instruction at Form 1 - 7 level. Attendance is compulsory until the end of the year in which a student turns 15 years of age.

LEVELS	RANGE	SCHOOLS	NAME OF SCHOOLS
Preschool only	PreS	1	Blackrock
Preschool & Primary only	PreS - G2	1	Tamarua
	PreS - G5	1	Rutaki
	PreS - G6	6	Takitumu, St Joseph's, Araura Primary, Vaitau Aitutaki SDA, Ivirua
Primary only	G1 - G6	1	Amuri
Preschool, Primary & Secondary	PreS - F2	5	Avarua, Nikao, Te-Uki-Ou, Arorangi, St Mary's
	PreS - F3	1	Rakahanga
	PreS - F4	1	Mitiaro
	PreS - F5CI	4	Pukapuka, Nassau, Tauhunu, Omoka
	PreS - F5NZ	2	Imanuela Akatemia, Mauke School
	PreS - F6	2	Mangaia School, Enuamanu School
Primary & Secondary only	G1 - F2	2	Avatea, Lucky Primary
	G2 - F3	1	Tetautua School
	G1 - F4	1	Papaaroa College
	G1 - F5CI	1	Tukao School
Secondary only	F1 - F5NZ	2	Titikaveka College, Nukutere College
	F1 - F6	1	Araura College
	F3 - F7	1	Tereora College

Schools with :	Rarotonga	Sth Group	Nth Group	Total
Pre-school pupils	9	10	5	24
Primary pupils	10	11	8	29
Secondary pupils	10	6	8	24

## STUDENT ENROLMENTS

### COMPARISON OF 2001 ENROLMENTS WITH 1996 AND 2000

DISTRICT	1996	1997	1998	1999	2000	2001	1996/2001 Change	1996/2001 % Change	2000/2001 Change	2000/2001 % Change
Aitutaki	855	763	726	710	651	642	-213	-25%	-9	-1%
Atiu	316	283	251	216	200	196	-120	-38%	-4	-2%
Mangaia	378	357	341	308	275	266	-112	-30%	-9	-3%
Manihiki	171	178	41	124	121	129	-42	-25%	8	7%
Mauke	249	233	239	215	202	189	-60	-24%	-13	-6%
Mitiaro	100	95	80	80	75	68	-32	-32%	-7	-9%
Nassau	29	30	42	38	37	38	9	31%	1	3%
Palmerston	10	3	0	12	0	9	-1	-10%	9	100%
Penrhyn	195	171	166	141	138	124	-71	-36%	-14	-10%
Pukapuka	268	254	251	258	264	249	-19	-7%	-15	-6%
Rakahanga	58	67	63	46	31	38	-20	-34%	7	23%
Rarotonga	2931	2801	2750	2619	2554	2709	-222	-8%	155	6%
<b>Total</b>	<b>5560</b>	<b>5235</b>	<b>4950</b>	<b>4767</b>	<b>4548</b>	<b>4657</b>	<b>-903</b>	<b>-16%</b>	<b>109</b>	<b>2%</b>

REGION	1996	1997	1998	1999	2000	2001	1996/2001 Change	1996/2001 % Change	2000/2001 Change	2000/2001 % Change
Northern Group	731	703	563	619	591	587	-144	-20%	-4	-1%
Rarotonga	2931	2801	2750	2619	2554	2709	-222	-8%	155	6%
Southern Group	1898	1731	1637	1529	1403	1361	-537	-28%	-42	-3%

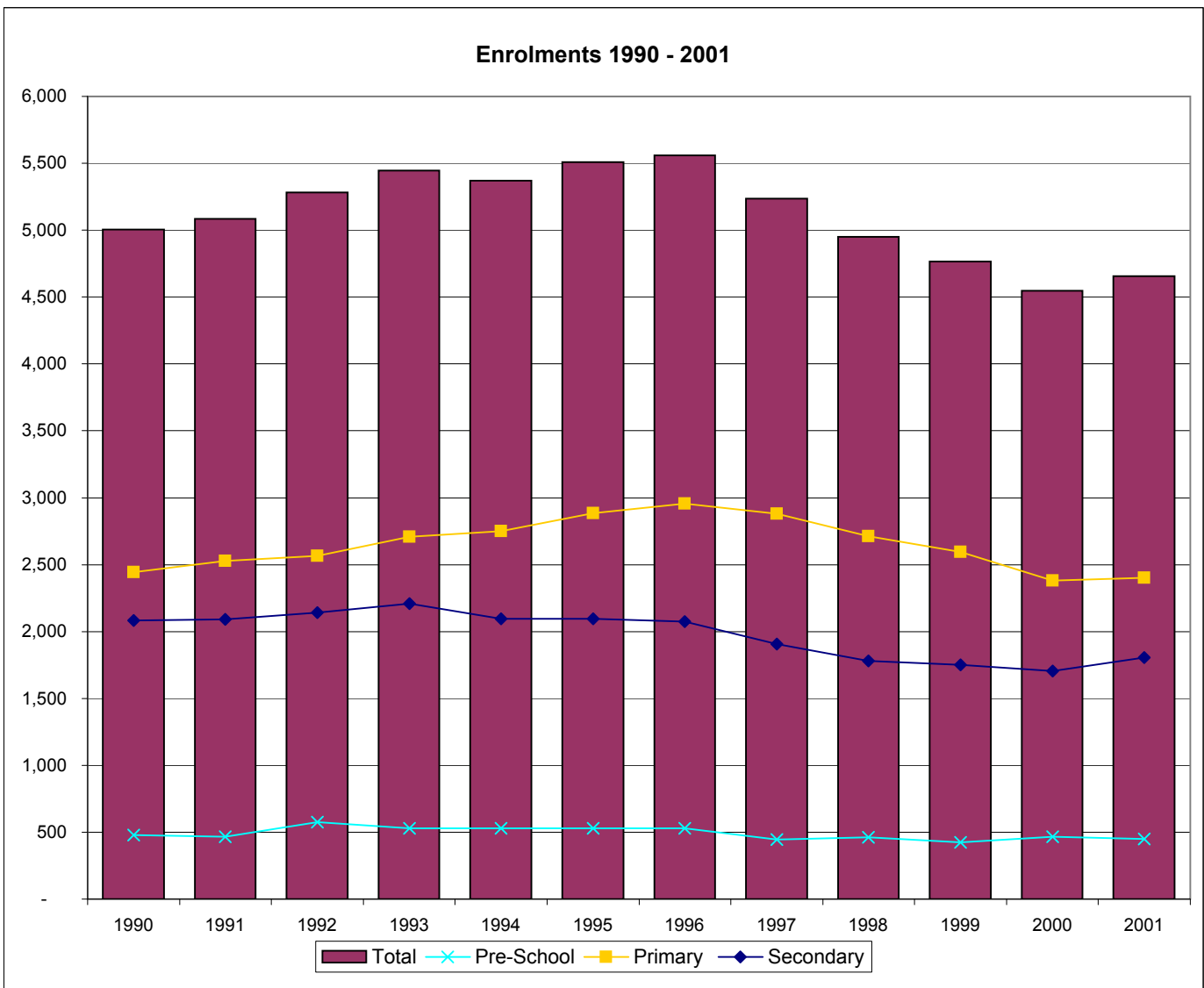
SCHOOL STATUS	1996	1997	1998	1999	2000	2001	1996/2001 Change	1996/2001 % Change	2000/2001 Change	2000/2001 % Change
Government	4763	4480	4219	4054	3861	3970	-793	-17%	109	3%
Non-government	797	755	731	713	687	687	-110	-14%	0	0%

### 1990-2001 ENROLMENTS BY LEVEL

Year	Pre-School	Primary	Secondary	Total
1990	480	2,442	2,082	5,004
1991	467	2,526	2,093	5,086
1992	575	2,564	2,143	5,282
1993	530	2,708	2,208	5,446
1994	527	2,750	2,094	5,371
1995	529	2,884	2,095	5,508
1996	530	2,956	2,074	5,560
1997	447	2,882	1,906	5,235
1998	460	2,711	1,779	4,950
1999	422	2,594	1,751	4,767
2000	465	2,379	1,704	4,548
2001	451	2,402	1,804	4,657
<b>Average</b>	<b>490</b>	<b>2,650</b>	<b>1,978</b>	<b>5,118</b>

Data for 1995 to 2001 is derived from the EMIS. Data from 1990 to 1994 is derived from the March Monthly School Returns.

Since 1996 there has been a 15% decrease in preschool rolls, a 19% decrease in primary rolls and a 13% decrease in secondary rolls. The overall decrease since 1996 is 16%.



**ENROLMENTS BY LEVEL AND GENDER**

ISLAND	SCHOOL	Students				Pre-school		Primary		Secondary		Total	
		PreS	Prim	Sec	Total	Male	Female	Male	Female	Male	Female	Female	%Female
Aitutaki	Aitutaki SDA	5	45	0	50	4	1	27	18	0	0	19	38.0
	Amuri Primary	0	41	0	41	0	0	26	15	0	0	15	36.6
	Araura College	0	0	274	274	0	0	0	0	138	136	136	49.6
	Araura Primary	8	172	0	180	5	3	86	86	0	0	89	49.4
	Vaitau Primary	9	88	0	97	6	3	40	48	0	0	51	52.6
Atiu	Enuamanu School	19	111	66	196	8	11	53	58	29	37	106	54.1
Mangaia	Ivirua Primary	7	30	0	37	3	4	17	13	0	0	17	45.9
	Mangaia School	26	70	114	210	12	14	40	30	52	62	106	50
	Tamarua Primary	4	15	0	19	3	1	5	10	0	0	11	58
Manihiki	Tauhunu High School	18	40	22	80	11	7	18	22	11	11	40	50
	Tukao Primary	0	31	18	49	0	0	20	11	6	12	23	47
Mauke	Mauke School	16	35	71	122	8	8	16	19	36	35	62	51
	St Mary's Primary	11	44	12	67	9	2	26	18	6	6	26	39
Mitiaro	Mitiaro High School	7	40	21	68	4	3	25	15	16	5	23	34
Nassau	Nassau Primary	3	30	5	38	3	0	21	9	3	2	11	29
Palmerston	Lucky School	0	7	2	9	0	0	2	5	1	1	6	67
Penryhn	Omoka High School	16	56	35	107	9	7	28	28	20	15	50	47
	Tetautua Primary	0	10	7	17	0	0	5	5	4	3	8	47
Pukapuka	Pukapuka High School	24	143	82	249	13	11	81	62	40	42	115	46
Rakahanga	Rakahanga High school	7	24	7	38	2	5	15	9	4	3	17	45
Rarotonga	Arorangi Primary School	37	128	41	206	20	17	69	59	28	13	89	43
	Avarua Primary	82	352	84	518	47	35	165	187	49	35	257	50
	Avatea Primary	0	291	101	392	0	0	162	129	50	51	180	46
	Blackrock Pre-school	26	0	0	26	14	12	0	0	0	0	12	46
	Imanuela Akatemia School	3	20	11	34	2	1	15	5	4	7	13	38
	Nikao Primary	32	91	32	155	15	17	55	36	18	14	67	43
	Nukutere College	0	0	118	118	0	0	0	0	60	58	58	49
	Papaaroa College	0	51	27	78	0	0	29	22	12	15	37	47
	Rutaki Primary	11	25	0	36	9	2	13	12	0	0	14	39
	St Joseph's Primary	14	160	0	174	7	7	93	67	0	0	74	43
	Takitumu Primary	30	173	0	203	17	13	92	81	0	0	94	46
	Tereora College	0	0	450	450	0	0	0	0	213	237	237	53
	Te-Uki-Ou School	36	79	25	140	20	16	40	39	12	13	68	49
Titikaveka College	0	0	179	179	0	0	0	0	83	96	96	54	
<b>Total</b>		<b>451</b>	<b>2402</b>	<b>1804</b>	<b>4657</b>	<b>251</b>	<b>200</b>	<b>1284</b>	<b>1118</b>	<b>895</b>	<b>909</b>	<b>2227</b>	<b>48</b>

ISLAND	Students				Pre-school		Primary		Secondary		Total	
	PreS	Prim	Sec	Total	Female	%Female	Female	%Female	Female	%Female	Female	%Female
Aitutaki	22	346	274	642	7	32	167	48	136	50	310	48
Atiu	19	111	66	196	11	58	58	52	37	56	106	54
Mangaia	37	115	114	266	19	51	53	46	62	54	134	50
Manihiki	18	71	40	129	7	39	33	46	23	58	63	49
Mauke	27	79	83	189	10	37	37	47	41	49	88	47
Mitiaro	7	40	21	68	3	43	15	38	5	24	23	34
Nassau	3	30	5	38	0	0	9	30	2	40	11	29
Palmerston	0	7	2	9	0	0	5	71	1	50	6	67
Penryhn	16	66	42	124	7	44	33	50	18	43	58	47
Pukapuka	24	143	82	249	11	46	62	43	42	51	115	46
Rakahanga	7	24	7	38	5	71	9	38	3	43	17	45
Rarotonga	271	1370	1068	2709	120	44	637	46	539	50	1296	48
<b>Total</b>	<b>451</b>	<b>2402</b>	<b>1804</b>	<b>4657</b>	<b>200</b>	<b>44</b>	<b>1118</b>	<b>47</b>	<b>909</b>	<b>50</b>	<b>2227</b>	<b>48</b>

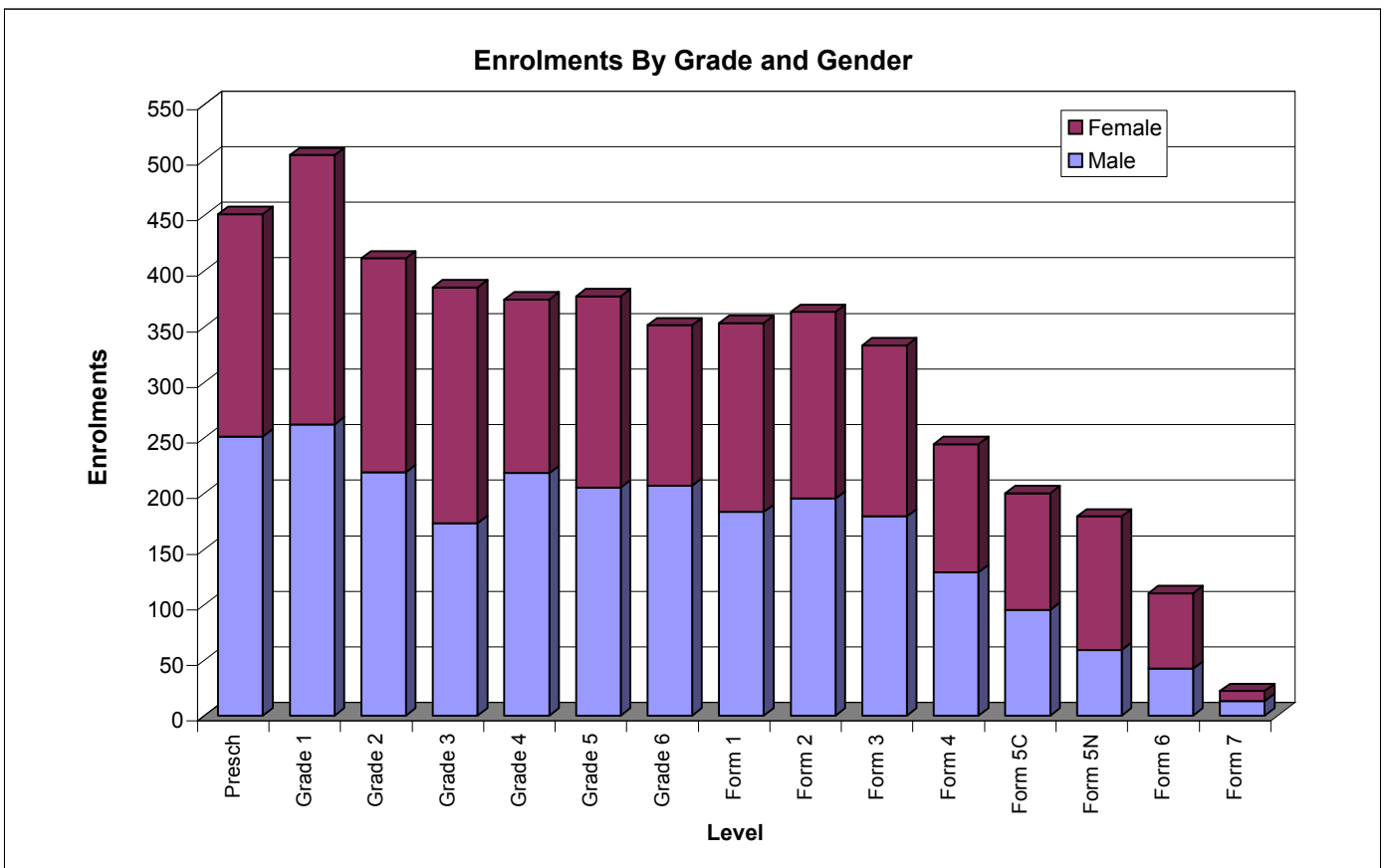
REGION	Students				Pre-school		Primary		Secondary		Total	
	PreS	Prim	Sec	Total	Female	%Female	Female	%Female	Female	%Female	Female	%Female
Northern Group	68	341	178	587	30	44	151	44	89	50	270	46
Rarotonga	271	1370	1068	2709	120	44	637	46	539	50	1296	48
Southern Group	112	691	558	1361	50	45	330	48	281	50	661	49
<b>Total</b>	<b>451</b>	<b>2402</b>	<b>1804</b>	<b>4657</b>	<b>200</b>	<b>44</b>	<b>1118</b>	<b>47</b>	<b>909</b>	<b>50</b>	<b>2227</b>	<b>48</b>

STATUS	Students				Pre-school		Primary		Secondary		Total	
	PreS	Prim	Sec	Total	Female	%Female	Female	%Female	Female	%Female	Female	%Female
Government	356	2003	1611	3970	148	42	915	46	815	51	1939	49
Non-government	95	399	193	687	52	55	203	51	94	49	288	42
<b>Total</b>	<b>451</b>	<b>2402</b>	<b>1804</b>	<b>4657</b>	<b>200</b>	<b>44</b>	<b>1118</b>	<b>47</b>	<b>909</b>	<b>50</b>	<b>2227</b>	<b>48</b>

## ENROLMENTS BY GRADE AND GENDER

Grade/Form	Male	Female	%Female	Total
Presch	251	200	44	451
Grade 1	262	242	48	504
Grade 2	219	192	47	411
Grade 3	173	212	55	385
Grade 4	218	156	42	374
Grade 5	205	172	46	377
Grade 6	207	144	41	351
Form 1	183	170	48	353
Form 2	195	168	46	363
Form 3	179	154	46	333
Form 4	129	115	47	244
Form 5C	95	105	53	200
Form 5N	59	120	67	179
Form 6	42	68	62	110
Form 7	13	9	41	22
<b>Total</b>	<b>2430</b>	<b>2227</b>	<b>48</b>	<b>4657</b>

Girls make up 44% and 47% of the preschool and primary school (G1-G6) enrolment respectively. However 50% of secondary (F1-F7) students are girls who dominate at the senior secondary (F5N-F7) level accounting for 63% of the enrolment.



## ENROLMENTS BY GRADE AND ISLAND

ISLAND	Schools	G1	G2	G3	G4	G5	G6	F1	F2	F3	F4	F5C	F5N	F6	F7	PreSch	Total
Aitutaki	5	89	50	49	58	46	54	51	53	54	43	33	20	20	0	22	642
Atiu	1	18	15	18	16	24	20	14	13	11	11	7	9	1	0	19	196
Mangaia	3	22	23	21	20	10	19	21	16	19	19	11	16	12	0	37	266
Manihiki	2	18	15	6	9	13	10	15	10	7	3	5	0	0	0	18	129
Mauke	2	12	11	10	11	14	21	7	17	19	12	13	15	0	0	27	189
Mitiaro	1	15	8	5	5	3	4	10	7	1	3	0	0	0	0	7	68
Nassau	1	7	5	5	4	4	5	0	0	3	1	1	0	0	0	3	38
Palmerston	1	5	0	1	0	1	0	0	2	0	0	0	0	0	0	0	9
Penrhyn	2	6	20	8	12	13	7	22	9	6	3	2	0	0	0	16	124
Pukapuka	1	40	24	27	15	18	19	17	18	19	16	12	0	0	0	24	249
Rakahanga	1	4	5	5	0	8	2	2	1	4	0	0	0	0	0	7	38
Rarotonga	14	268	235	230	224	223	190	194	217	190	133	116	119	77	22	271	2709
<b>Total</b>	<b>34</b>	<b>504</b>	<b>411</b>	<b>385</b>	<b>374</b>	<b>377</b>	<b>351</b>	<b>353</b>	<b>363</b>	<b>333</b>	<b>244</b>	<b>200</b>	<b>179</b>	<b>110</b>	<b>22</b>	<b>451</b>	<b>4657</b>

## ENROLMENTS BY GRADE AND REGION

REGION	Schools	G1	G2	G3	G4	G5	G6	F1	F2	F3	F4	F5C	F5N	F6	F7	PreSch	Total
Nth Group	8	80	69	52	40	57	43	56	40	39	23	20	0	0	0	68	587
Rarotonga	14	268	235	230	224	223	190	194	217	190	133	116	119	77	22	271	2709
Sth Group	12	156	107	103	110	97	118	103	106	104	88	64	60	33	0	112	1361

## ENROLMENTS BY GRADE AND SCHOOL STATUS

STATUS	Schools	G1	G2	G3	G4	G5	G6	F1	F2	F3	F4	F5C	F5N	F6	F7	PreSch	Total
Government	26	411	352	329	311	314	286	299	308	303	220	187	162	110	22	356	3970
Non-govt	8	93	59	56	63	63	65	54	55	30	24	13	17	0	0	95	687

## STUDENT REPETITION RATES AT EACH GRADE

Year	Roll	REPEATERS		OVERAGE	
		Number	%	Number	%
Pre Sch	451	0	0.0	-	
Grade 1	504	31	6.2	77	15
Grade 2	411	10	2.4	59	14
Grade 3	385	0	0.0	89	23
Grade 4	374	5	1.3	64	17
Grade 5	377	5	1.3	78	21
Grade 6	351	7	2.0	103	29
Form 1	353	3	0.8	37	10
Form 2	363	0	0.0	48	13
Form 3	333	1	0.3	127	38
Form 4	244	1	0.4	105	43
Form 5C	200	28	14.0	80	40
Form 5N	179	30	16.8	69	39
Form 6	110	15	13.6	47	43
Form 7	22	0	0.0	7	32
<b>Total</b>	<b>4657</b>	<b>136</b>	<b>2.9</b>	<b>990</b>	<b>21</b>

The overage data is based on the assumption that, on January 1, a Grade 1 student should be 5, a Grade 2 student should be 6 and each succeeding Grade student should be one year older. Those older than the assumed age for the grade are deemed to be overage. Compared to the year 2000 there has been an increase in overage students. Total numbers have increased from 532(12%) to 990(21%).

The number of students repeating at each level is directly recorded on each school's 2001 EMIS survey form by the school's principal. Formal entry criteria tend to apply to only Form 5NZSC level and higher.



**ENROLMENTS BY GRADE/FORM**

School	PreSch	Gr 1	Gr 2	Gr 3	Gr 4	Gr 5	Gr 6	F 1	F 2	F 3	F 4	F 5C	F 5N	F 6	F 7	Total
Blackrock Pre-school	26	0	0	0	0	0	0	0	0	0	0	0	0	0	0	26
Te-Uki-Ou School	36	15	20	13	14	10	7	16	9	0	0	0	0	0	0	140
Avarua Primary	82	64	58	59	69	59	43	44	40	0	0	0	0	0	0	518
Avatea Primary	0	53	47	66	34	51	40	48	53	0	0	0	0	0	0	392
Takitumu Primary	30	35	27	30	28	22	31	0	0	0	0	0	0	0	0	203
Nikao Primary	32	19	20	9	15	16	12	12	20	0	0	0	0	0	0	155
Rutaki Primary	11	4	6	6	5	4	0	0	0	0	0	0	0	0	0	36
St Joseph's Primary	14	41	24	24	22	22	27	0	0	0	0	0	0	0	0	174
Imanuela Akatemia School	3	5	0	1	2	11	1	2	2	3	3	0	1	0	0	34
Arorangi Primary School	37	20	24	15	25	21	23	18	23	0	0	0	0	0	0	206
Tereora College	0	0	0	0	0	0	0	0	0	118	95	59	79	77	22	450
Titikaveka College	0	0	0	0	0	0	0	21	35	42	14	44	23	0	0	179
Nukutere College	0	0	0	0	0	0	0	22	30	20	17	13	16	0	0	118
Papaaroa College	0	12	9	7	10	7	6	11	5	7	4	0	0	0	0	78
Amuri Primary	0	9	7	5	11	1	8	0	0	0	0	0	0	0	0	41
Araura Primary	8	44	30	23	26	23	26	0	0	0	0	0	0	0	0	180
Vaitau Primary	9	23	10	15	12	17	11	0	0	0	0	0	0	0	0	97
Aitutaki SDA	5	13	3	6	9	5	9	0	0	0	0	0	0	0	0	50
Araura College	0	0	0	0	0	0	0	51	53	54	43	33	20	20	0	274
Ivirua Primary	7	4	4	5	7	5	5	0	0	0	0	0	0	0	0	37
Tamarua Primary	4	11	4	0	0	0	0	0	0	0	0	0	0	0	0	19
Mangaia School	26	7	15	16	13	5	14	21	16	19	19	11	16	12	0	210
Enuamanu School	19	18	15	18	16	24	20	14	13	11	11	7	9	1	0	196
St Mary's Primary	11	7	3	5	6	8	15	3	9	0	0	0	0	0	0	67
Mauke School	16	5	8	5	5	6	6	4	8	19	12	13	15	0	0	122
Mitiaro High School	7	15	8	5	5	3	4	10	7	1	3	0	0	0	0	68
Lucky Primary	0	5	0	1	0	1	0	0	2	0	0	0	0	0	0	9
Pukapuka High School	24	40	24	27	15	18	19	17	18	19	16	12	0	0	0	249
Nassau Primary	3	7	5	5	4	4	5	0	0	3	1	1	0	0	0	38
Tukao Primary	0	7	7	2	4	8	3	7	4	3	1	3	0	0	0	49
Tauhunu High School	18	11	8	4	5	5	7	8	6	4	2	2	0	0	0	80
Rakahanga High school	7	4	5	5	0	8	2	2	1	4	0	0	0	0	0	38
Tetautua Primary	0	0	5	1	0	2	2	3	2	2	0	0	0	0	0	17
Omoka High School	16	6	15	7	12	11	5	19	7	4	3	2	0	0	0	107
<b>Total</b>	<b>451</b>	<b>504</b>	<b>411</b>	<b>385</b>	<b>374</b>	<b>377</b>	<b>351</b>	<b>353</b>	<b>363</b>	<b>333</b>	<b>244</b>	<b>200</b>	<b>179</b>	<b>110</b>	<b>22</b>	<b>4657</b>

**1990 - 2001 ENROLMENTS BY GRADE/FORM**

Year	PreSch	Gr 1	Gr 2	Gr 3	Gr 4	Gr 5	Gr 6	F 1	F 2	F 3	F 4	F 5C	F 5N	F 6	F 7	Total
1990	480	531	373	388	377	383	390	351	392	382	323	316	215	72	31	5,004
1991	467	567	392	408	402	390	367	387	357	364	337	318	221	85	24	5,086
1992	575	649	361	387	391	395	381	385	403	352	343	315	207	109	29	5,282
1993	530	745	408	387	389	386	393	406	380	381	324	315	243	108	51	5,446
1994	527	732	485	389	366	388	390	434	331	346	346	279	237	91	30	5,371
1995	529	736	488	460	430	368	402	369	408	370	306	324	202	96	20	5,508
1996	530	757	475	488	438	422	376	365	383	365	307	295	235	92	32	5,560
1997	447	733	433	442	444	445	385	329	343	335	298	272	215	90	24	5,235
1998	460	686	416	381	414	407	407	355	304	301	284	240	176	93	26	4,950
1999	422	667	405	397	367	381	377	359	314	277	267	222	183	96	33	4,767
2000	465	514	366	406	370	353	370	365	343	274	219	216	178	74	35	4,548
2001	451	504	411	385	374	377	351	353	363	333	244	200	179	110	22	4,657
<b>Average</b>	<b>490</b>	<b>652</b>	<b>418</b>	<b>410</b>	<b>397</b>	<b>391</b>	<b>382</b>	<b>372</b>	<b>360</b>	<b>340</b>	<b>300</b>	<b>276</b>	<b>208</b>	<b>93</b>	<b>30</b>	<b>5,118</b>

**ENROLMENTS BY GRADE, AGE AND GENDER**

Grade/Form	Total																Total
	4	5	6	7	8	9	10	11	12	13	14	15	16	17	18	19+	
Presch	451	0	0	0	0	0	0	0	0	0	0	0	0	0	0	0	451
Grade 1	110	317	75	2	0	0	0	0	0	0	0	0	0	0	0	0	504
Grade 2	0	41	311	53	6	0	0	0	0	0	0	0	0	0	0	0	411
Grade 3	0	0	40	256	86	3	0	0	0	0	0	0	0	0	0	0	385
Grade 4	0	0	0	32	278	60	3	1	0	0	0	0	0	0	0	0	374
Grade 5	0	0	0	1	29	269	67	11	0	0	0	0	0	0	0	0	377
Grade 6	0	0	0	0	0	27	221	94	9	0	0	0	0	0	0	0	351
Form 1	0	0	0	0	0	0	34	282	31	5	1	0	0	0	0	0	353
Form 2	0	0	0	0	0	0	0	47	268	44	2	2	0	0	0	0	363
Form 3	0	0	0	0	0	0	0	1	23	182	121	5	0	1	0	0	333
Form 4	0	0	0	0	0	0	0	0	0	7	132	100	5	0	0	0	244
Form 5C	0	0	0	0	0	0	0	0	0	3	27	90	63	16	1	0	200
Form 5N	0	0	0	0	0	0	0	0	0	1	2	28	79	47	20	2	179
Form 6	0	0	0	0	0	0	0	0	0	0	0	0	16	47	36	11	110
Form 7	0	0	0	0	0	0	0	0	0	0	0	0	1	3	11	7	22
<b>Total</b>	<b>561</b>	<b>358</b>	<b>426</b>	<b>344</b>	<b>399</b>	<b>359</b>	<b>325</b>	<b>436</b>	<b>331</b>	<b>242</b>	<b>285</b>	<b>225</b>	<b>164</b>	<b>114</b>	<b>68</b>	<b>20</b>	<b>4657</b>
<b>Female</b>																	
Grade/Form	4	5	6	7	8	9	10	11	12	13	14	15	16	17	18	19+	Total
Presch	200																200
Grade 1	55	160	26	1													242
Grade 2		26	137	25	4												192
Grade 3			22	132	58												212
Grade 4				13	112	31											156
Grade 5				1	12	124	30	5									172
Grade 6						15	91	37	1								144
Form 1							23	134	11	2							170
Form 2								34	117	16		1					168
Form 3								1	11	94	44	4					154
Form 4										3	64	47	1				115
Form 5C										2	15	53	26	8	1		105
Form 5N										1	0	19	61	26	11	2	120
Form 6													11	31	16	10	68
Form 7														2	5	2	9
<b>Total</b>	<b>255</b>	<b>186</b>	<b>185</b>	<b>172</b>	<b>186</b>	<b>170</b>	<b>144</b>	<b>211</b>	<b>140</b>	<b>118</b>	<b>123</b>	<b>124</b>	<b>99</b>	<b>67</b>	<b>33</b>	<b>14</b>	<b>2227</b>
<b>Male</b>																	
Grade/Form	4	5	6	7	8	9	10	11	12	13	14	15	16	17	18	19+	Total
Presch	251																251
Grade 1	55	157	49	1													262
Grade 2		15	174	28	2												219
Grade 3			18	124	28	3											173
Grade 4				19	166	29	3	1									218
Grade 5					17	145	37	6									205
Grade 6						12	130	57	8								207
Form 1							11	148	20	3	1						183
Form 2								13	151	28	2	1					195
Form 3									12	88	77	1	0	1			179
Form 4										4	68	53	4				129
Form 5C										1	12	37	37	8			95
Form 5N											2	9	18	21	9		59
Form 6													5	16	20	1	42
Form 7													1	1	6	5	13
<b>Total</b>	<b>306</b>	<b>172</b>	<b>241</b>	<b>172</b>	<b>213</b>	<b>189</b>	<b>181</b>	<b>225</b>	<b>191</b>	<b>124</b>	<b>162</b>	<b>101</b>	<b>65</b>	<b>47</b>	<b>35</b>	<b>6</b>	<b>2430</b>

## 1997 ENROLMENT RATIOS

Age	Population	Enrolment	% enrolment	Not enrolled
3.5	226	205	91%	21
4	470	409	87%	61
5	451	475	105%	-24
6	458	423	92%	35
7	471	471	100%	0
8	397	393	99%	4
9	416	437	105%	-21
10	395	386	98%	9
11	370	412	111%	-42
12	361	361	100%	0
13	365	338	93%	27
14	388	318	82%	70
15	371	259	70%	112
16	339	226	67%	113
17	328	88	27%	240
18	324	25	8%	299
19	284	9	3%	275

<b>Preschool</b>	Population	Enrolment	% enrolment	Not enrolled	% not enrolled
Age 3.5 - 4	696	614	88%	82	12%

Enrolment figure is total 3.5-4 year olds in Preschool and Primary schools

<b>Primary Ages</b>	Population	Enrolment	% enrolment	Not enrolled	% not enrolled
Ages 5 - 10	2588	2585	100%	3	0%

Enrolment figure is total 5-10 year olds in Preschool, Primary and Secondary schools

<b>Secondary Ages</b>	Population	Enrolment	% enrolment	Not enrolled	% not enrolled
Ages 11 - 17	2522	2002	79%	520	21%

Enrolment figure is total 11-17year olds in Primary and Secondary schools

<b>Compulsory</b>	Population	Enrolment	% enrolment	Not enrolled	% not enrolled
Ages 5 - 14	3621	3539	98%	82	2%

<b>Overall</b>	Population	Enrolment	% enrolment	Not enrolled	% not enrolled
Ages 3.5 - 17	5806	5201	90%	605	10%

Source : Cook Islands Age Group Population data derived from the Census of Population and Dwellings, 1 December **1996**, Statistics Office, Rarotonga.

Enrolment data is derived from the 1 March **1997** EMIS. Students' ages are recorded as of 1 January 1997.

## STUDENT ACHIEVEMENT

### FORM 7 EXAMINATION RESULTS 1994 - 2000

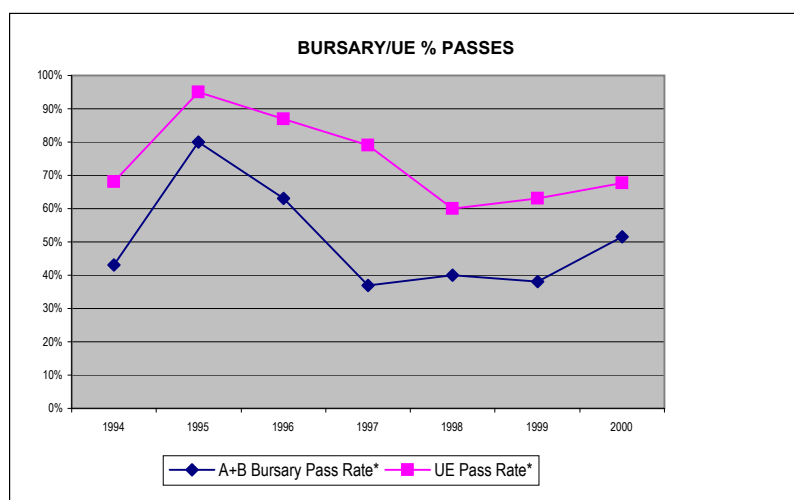
	1994	1995	1996	1997	1998	1999	2000
Scholarship Marks	2	0	1	2	0	2	0
A Bursary Passes	4	7	3	2	1	5	1
B Bursary Passes	8	9	16	5	7	7	15
A+B Bursary	12	16	19	7	8	12	16
University Entrance Passes	19	19	26	15	12	20	21
Pupils (Total)	28	20	30	21	23	34	33
Pupils taking 1-3 subjects	0	0	0	2	3	1	2
Pupils taking 5 subjects	28	20	30	19	20	32	31
A+B Bursary Pass Rate*	43%	80%	63%	37%	40%	38%	52%
UE Pass Rate*	68%	95%	87%	79%	60%	63%	68%

Source: NZQA spreadsheets

The data is based on preliminary results (excluding recounts and remarking).

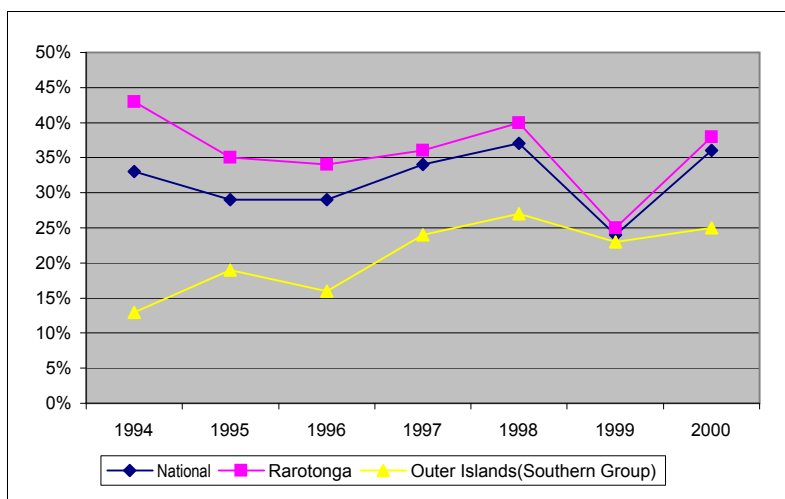
**Note:**

\* Percentages calculated per pupils taking 5 subjects



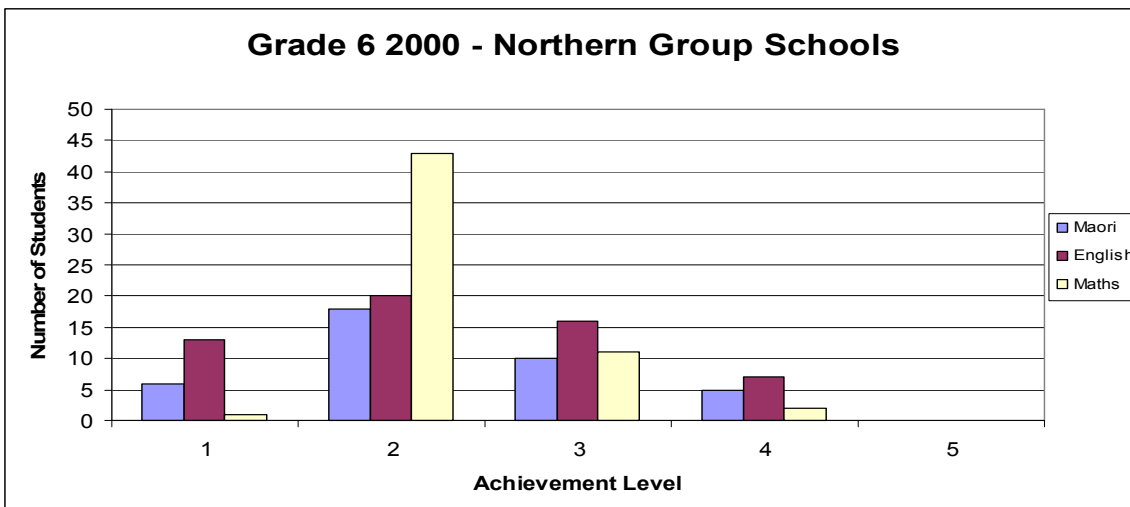
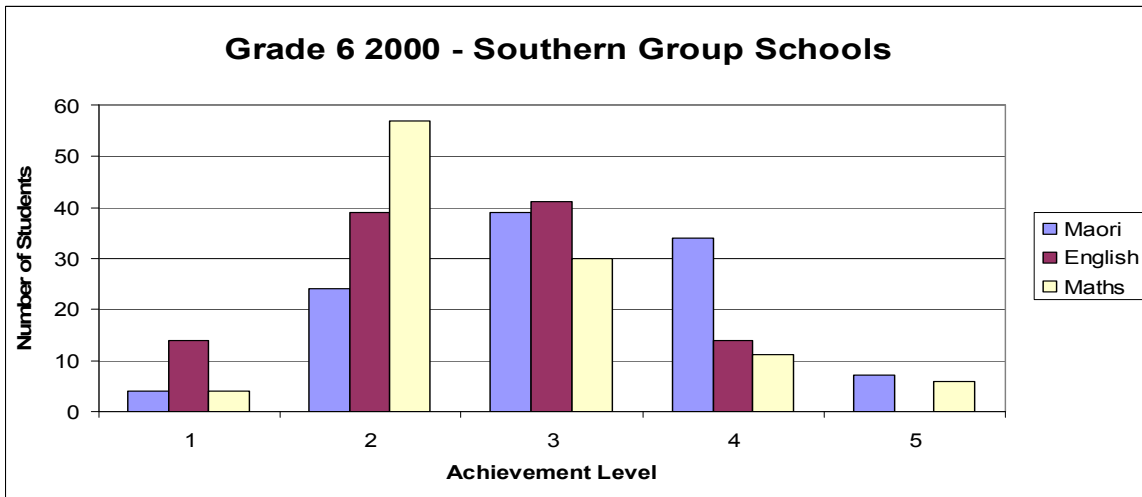
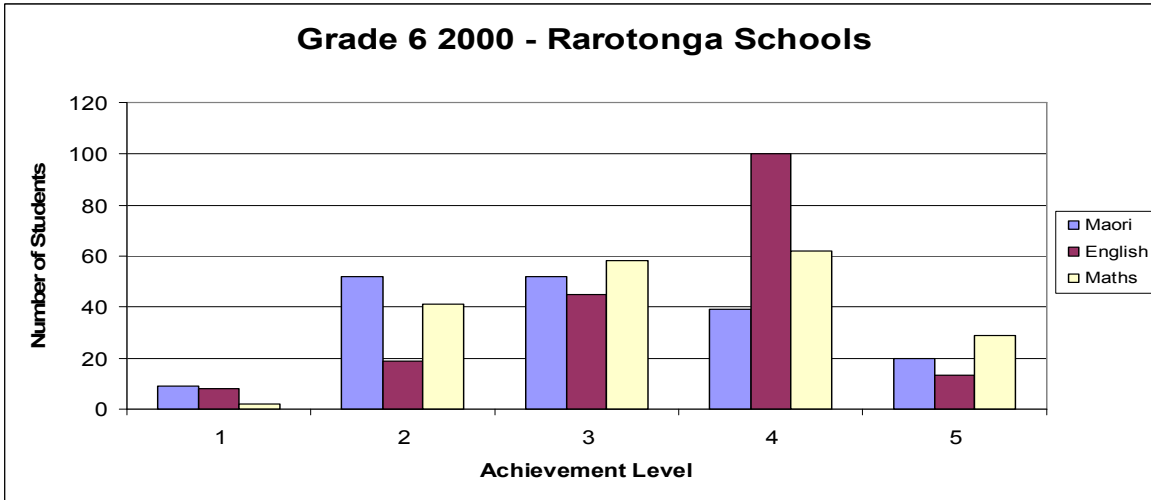
### NEW ZEALAND SCHOOL CERTIFICATE RESULTS 1994 - 2000

NZSC Pass Rates	1994	1995	1996	1997	1998	1999	2000
National	33%	29%	29%	34%	37%	24%	36%
Rarotonga	43%	35%	34%	36%	40%	25%	38%
Outer Islands(Southern Group)	13%	19%	16%	24%	27%	23%	25%



The 2000 NZSC overall results improved from 1999. Cook Islands students sat 689 papers (excluding NZ Maori) and achieved marks of 50% or higher in 250 papers, a 36% "pass" rate.

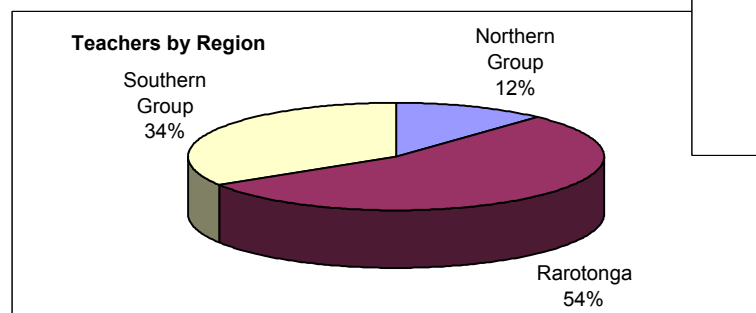
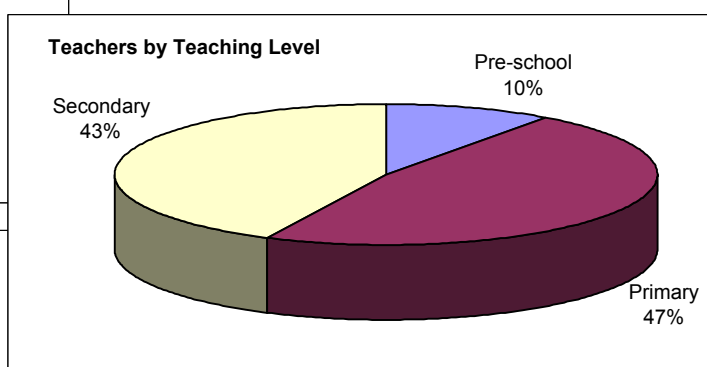
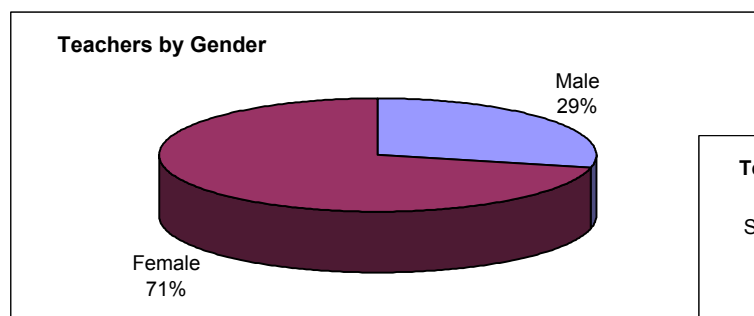
## 2000 NATIONAL GRADE 6 RESULTS



## TEACHERS

### TEACHERS BY GENDER, TEACHING LEVEL AND NATIONALITY

STATUS	Teachers			Teaching Level			Nationality	
	Total	Female	%Female	Pre-school	Primary	Secondary	Cook-Is	%CIs.
Government	237	166	70	20	110	107	218	92
Non-government	50	39	78	9	25	16	35	70
<b>Total</b>	<b>287</b>	<b>205</b>	<b>71</b>	<b>29</b>	<b>135</b>	<b>123</b>	<b>253</b>	<b>88</b>

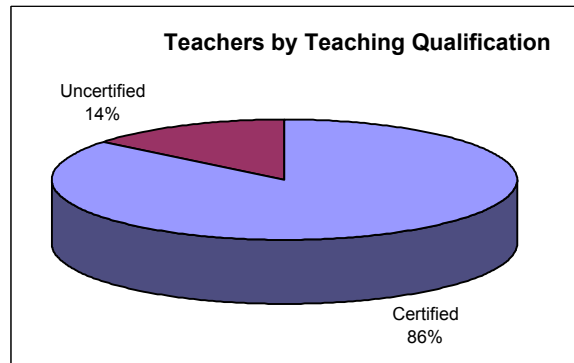
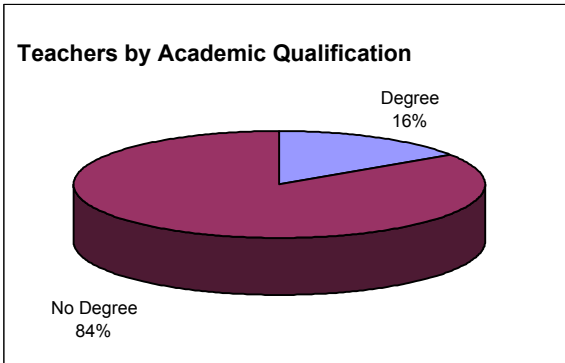


REGION	Teachers			Teaching Level			Nationality	
	Total	Female	%Female	Pre-school	Primary	Secondary	Cook-Is	%CIs.
Northern Group	34	23	68	5	17	12	34	100
Rarotonga	156	113	72	14	76	66	131	84
Southern Group	97	69	71	10	42	45	88	91

ISLAND	Teachers			Teaching Level			Nationality	
	Total	Female	%Female	Pre-school	Primary	Secondary	Cook-Is	%CIs.
Aitutaki	44	33	75	4	20	20	41	93
Atiu	13	10	77	1	6	6	10	77
Mangaia	19	12	63	2	8	9	17	89
Manihiki	10	8	80	2	5	3	10	100
Mauke	16	10	63	2	6	8	15	94
Mitiaro	5	4	80	1	2	2	5	100
Nassau	1	1	100	0	1	0	1	100
Palmerston	1	0	0	0	1	0	1	0
Penrhyn	6	5	83	1	3	2	6	100
Pukapuka	12	6	50	1	5	6	12	100
Rakahanga	4	3	75	1	2	1	4	100
Rarotonga	156	113	72	14	76	66	131	84

## TEACHER QUALIFICATIONS

STATUS	Total Teachers	No. of Teachers with		No. of Teachers		% Teachers (with)	
		Degree	No Degree	Certified	Uncertified	Degree	Certified
Government	237	36	201	206	31	15	87
Non-government	50	9	41	40	10	18	80
<b>Total</b>	<b>287</b>	<b>45</b>	<b>242</b>	<b>246</b>	<b>41</b>	<b>16</b>	<b>86</b>



REGION	Total Teachers	No. of Teachers with		No. of Teachers		% Teachers (with)	
		Degree	No Degree	Certified	Uncertified	Degree	Certified
Northern Group	34	2	32	29	5	6	85
Rarotonga	156	27	129	132	24	17	85
Southern Group	97	16	81	85	12	16	88

ISLAND	Total Teachers	No. of Teachers with		No. of Teachers		% Teachers (with)	
		Degree	No Degree	Certified	Uncertified	Degree	Certified
Aitutaki	44	8	36	38	6	18	86
Atiu	13	3	10	11	2	23	85
Mangaia	19	3	16	19	0	16	100
Manihiki	10	1	9	9	1	10	90
Mauke	16	2	14	12	4	13	75
Mitiaro	5	0	5	5	0	0	100
Nassau	1	0	1	1	0	0	100
Palmerston	1	0	1	0	1	0	0
Penrhyn	6	0	6	6	0	0	100
Pukapuka	12	1	11	10	2	8	83
Rakahanga	4	0	4	3	1	0	75
Rarotonga	156	27	129	132	24	17	85

**Note:**

1. Certified teachers are those with a Teachers College Certificate or Diploma.

2. The number of teachers with degrees and certified to teach are as reported by Principals and are not derived from a file check of verified qualifications held by the Ministry of Education.

## STUDENT : TEACHER RATIOS

STATUS	Number of Teachers			Total Students	S : T RATIOS		
	Male	Female	Total		2001	2000	Change
Government	71	166	237	3970	16.8	16.2	0.6
Non-government	11	39	50	687	13.7	14.6	-0.9
Total	82	205	287	4657	16.2	16.1	0.1

REGION	Number of Teachers			Total Students	S : T RATIOS		
	Male	Female	Total		2001	2000	Change
Northern Group	11	23	34	587	17.3	17.9	-0.6
Rarotonga	43	113	156	2709	17.4	16.5	0.9
Southern Group	28	69	97	1361	14.0	14.5	-0.4
Total	82	205	287	4657	16.2	16.0	0.3

ISLAND	Number of Teachers			Total Students	S : T RATIOS		
	Male	Female	Total		2001	2000	Change
Aitutaki	11	33	44	642	14.6	14.8	-0.2
Atiu	3	10	13	196	15.1	13.3	1.7
Mangaia	7	12	19	266	14.0	15.3	-1.3
Manihiki	2	8	10	129	12.9	12.1	0.8
Mauke	6	10	16	189	11.8	12.6	-0.8
Mitiaro	1	4	5	68	13.6	18.8	-5.2
Nassau	0	1	1	38	38.0	37.0	1.0
Palmerston	1	0	1	9	0.0	0.0	0.0
Penrhyn	1	5	6	124	20.7	23.0	-2.3
Pukapuka	6	6	12	249	20.8	20.3	0.4
Rakahanga	1	3	4	38	9.5	10.3	-0.8
Rarotonga	43	113	156	2709	17.4	16.5	0.9
Total	82	205	287	4657	16.2	16.0	0.3

Note: Teacher numbers include principals and senior teachers.

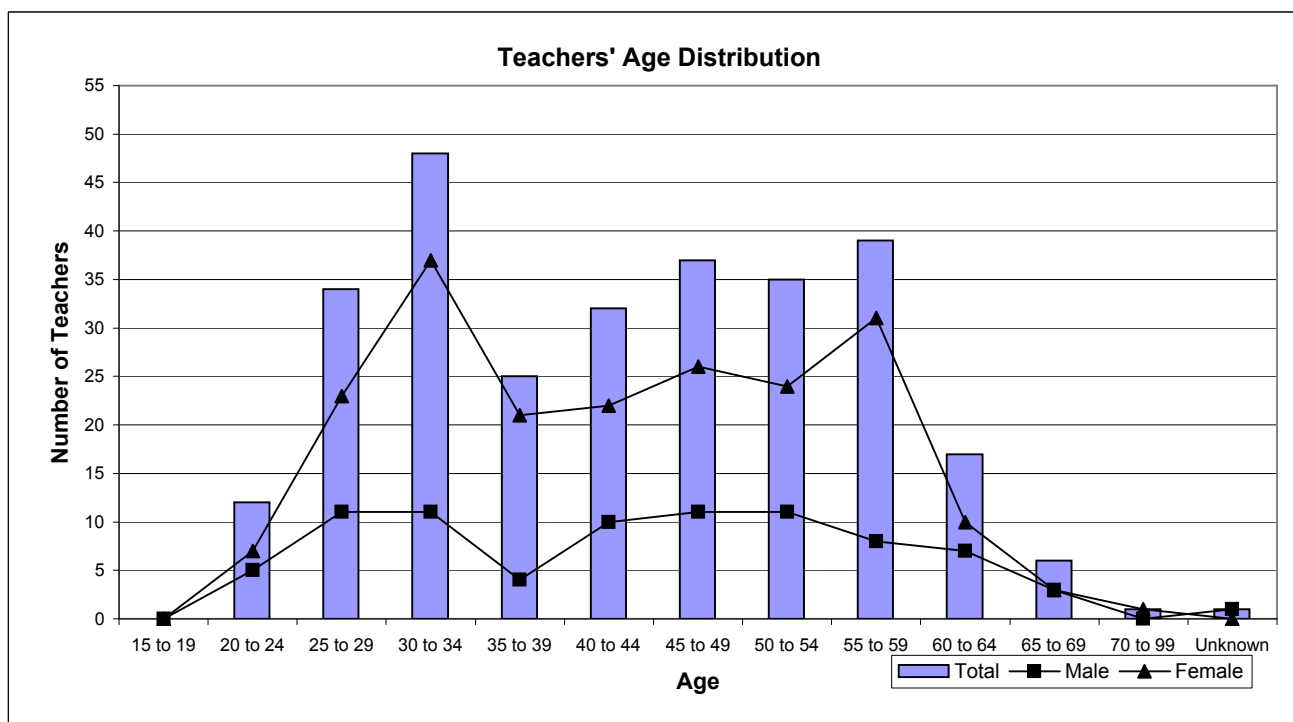


**STUDENT : TEACHER RATIOS (contd)**

SCHOOL	Teachers						S : T RATIO			
	Pre-sch	Primary	Secondary	Male	Female	Total	Pre-sch	Primary	Secondary	Total
Aitutaki SDA	1	2	0	0	3	3	5	23	-	17
Amuri Primary	0	4	0	0	4	4	-	10	-	10
Araura College	0	0	20	10	10	20	-	-	14	14
Araura Primary	1	9	0	1	9	10	8	19	-	18
Arorangi Primary School	1	8	2	2	9	11	37	16	21	19
Avarua Primary	2	15	4	4	17	21	41	23	21	25
Avatea Primary	0	15	4	3	16	19	-	19	25	21
Blackrock Pre-school	2	0	0	0	2	2	13	-	-	13
Enuamanu School	1	6	6	3	10	13	19	19	11	15
Imanuela Akatemia School	1	3	1	1	4	5	-	7	11	7
Ivirua Primary	1	2	0	1	2	3	7	15	-	12
Lucky Primary	0	1	0	1	0	1	-	7	-	9
Mangaia School	1	5	9	5	10	15	26	14	13	14
Mauke School	1	3	7	6	5	11	16	12	10	11
Mitiaro High School	1	2	2	1	4	5	-	20	-	14
Nassau Primary	0	1	0	0	1	1	-	30	-	38
Nikao Primary	1	6	1	1	7	8	-	-	32	19
Nukutere College	0	0	10	6	4	10	-	-	12	12
Omoka High School	0	2	1	0	3	3	-	28	35	36
Papaaroa College	0	3	3	2	4	6	-	17	9	13
Pukapuka High School	1	5	6	6	6	12	-	29	14	21
Rakahanga High school	1	2	1	1	3	4	7	12	-	10
Rutaki Primary	1	1	0	0	2	2	11	25	-	18
St Joseph's Primary	1	8	0	2	7	9	14	20	-	19
St Mary's Primary	1	3	1	0	5	5	11	15	-	13
Takitumu Primary	2	11	0	2	11	13	-	16	-	16
Tamarua Primary	0	1	0	1	0	1	-	15	-	19
Tauhunu High School	2	2	1	1	4	5	9	20	22	16
Tereora College	0	0	26	16	10	26	-	-	17	17
Tetautua Primary	1	1	1	1	2	3	-	10	-	6
Te-Uki-Ou School	3	6	1	0	10	10	-	-	25	14
Titikaveka College	0	0	14	4	10	14	-	-	13	13
Tukao Primary	0	3	2	1	4	5	-	-	-	10
Vaitau Primary	1	6	0	0	7	7	9	15	-	14
Total	28	136	123	82	205	287	16	18	15	16

### AGE DISTRIBUTION OF TEACHERS

Age Range	Total	Male	Female	%Female	Total %
15 to 19	0	0	0	0	0
20 to 24	12	5	7	58	3
25 to 29	34	11	23	68	11
30 to 34	48	11	37	77	18
35 to 39	25	4	21	84	10
40 to 44	32	10	22	69	11
45 to 49	37	11	26	70	13
50 to 54	35	11	24	69	12
55 to 59	39	8	31	79	15
60 to 64	17	7	10	59	5
65 to 69	6	3	3	50	1
70 to 99	1	0	1	100	0
Unknown	1	1	0	0	0
<b>Total</b>	<b>287</b>	<b>82</b>	<b>205</b>	<b>71</b>	<b>100</b>



### 2000/2001 TEACHER COMPARISONS

Teachers	2000	2001	Change	% Change
Total	285	287	2	1
Male	75	82	7	9
Female	210	205	-5	-2
Cook Islanders	249	253	4	2
Non-Cook Islanders	36	34	-2	-6
Trained Teachers Cert	251	241	-10	-4
Tchrs with a Degree	47	45	-2	-4

## SCHOOL BUILDINGS AND FACILITIES

### SCHOOL CAPACITY

STATUS	Schools	Students	Teachers	Classrooms	S:C Ratio
Church	6	521	38	38	14
Government	26	3970	237	252	16
Private	2	166	12	8	21
<b>Total</b>	<b>34</b>	<b>4657</b>	<b>287</b>	<b>298</b>	<b>16</b>

Note: Classrooms exclude specialist rooms.

S:C Ratio - number of students per class.

REGION	Schools	Students	Teachers	Classrooms	S:C Ratio
Northern Group	8	587	34	39	15
Rarotonga	14	2709	156	151	18
Southern Group	12	1361	97	108	13

DISTRICT	Schools	Students	Teachers	Classrooms	S:C Ratio
Aitutaki	5	642	44	41	16
Atiu	1	196	13	20	10
Mangaia	3	266	19	26	10
Manihiki	2	129	10	9	14
Mauke	2	189	16	14	14
Mitiaro	1	68	5	7	10
Nassau	1	38	1	2	19
Palmerston	1	9	1	1	9
Penrhyn	2	124	6	9	14
Pukapuka	1	249	12	12	21
Rakahanga	1	38	4	6	6
Rarotonga	14	2709	156	151	18

### SELECTED BUILDINGS

BUILDING	2001				Changes from 2000			
	Total	Good	To Repair	Area(sq.m)	Total	Good	To Repair	Area(sq.m)
Classroom	298	155	142	31060	2	20	-19	2114
Office	59	41	18	2160	-1	3	-4	-1941
Workshop	14	4	10	2606	1	-1	2	55
Home /Ec.	11	5	6	1388	1	0	1	-34
Science Lab.	16	3	13	1715	1	-2	3	-30
Hall	10	6	4	6073	1	2	-1	85
Staffroom	27	20	7	2636	1	2	-1	356
Library	32	27	5	3349	-1	0	-1	-2452

## SELECTED APPARATUS IN ALL SCHOOLS

APPARATUS	2000	2001	Change
Duplicator	10	9	-1
Photocopier	42	43	1
Typewriter	90	101	11
Computer	140	156	16
Radio	34	55	21
Television/Video	24	26	2
Overhead projector	23	25	2

## SELECTED FURNITURE IN ALL SCHOOLS

Type of Furniture	2001			Change from 2000		
	Total	Good	To Repair	Total	Good	To Repair
Desk/Table	4269	3532	737	-77	-158	81
Chair/Form	5210	4509	701	129	175	-46
Workbench	332	223	109	22	23	-1
Blackboard	409	339	70	-6	2	-8

## EDUCATION FUNDING

### SCHOOL BASED FUND RAISING IN SCHOOLS

Principals are requested to record the total amount of funds raised by the school and the school committee in the year prior to the EMIS i.e. the 2001 EMIS records funds raised in 2000. Only 16 schools reported fund-raising for both 1999 and 2000. The two most likely reasons for the low report rate is that many principals do not know the full financial situation of their schools and that some principals are reluctant to divulge such information. The tables below analyse the data supplied by these 16 schools. As in previous years, fund-raising continues to increase most significantly on Rarotonga and by Private Schools

Local Fund-raising	No. of Sch.	Funds raised		Change	
		1999	2000	\$	%
Rarotonga	7	194,056	198,076	4,020	2
Southern Group	7	24,722	29,381	4,659	19
Northern Group	2	5,954	24,294	18,340	308
Government Schools	12	125,132	142,750	17,618	14
Non-govt	4	99,600	109,000	9,400	9
<b>Total</b>	<b>16</b>	<b>224,732</b>	<b>251,750</b>	<b>27,018</b>	<b>12</b>

Per capita Fund-raising	Pupils		Funds per Pupil		Change	
	1999	2000	1999	2000	\$	%
Rarotonga	1521	1638	128	121	-7	-5
Southern Group	806	812	31	36	6	18
Northern Group	98	118	61	206	145	239
Government Schools	2068	2217	61	64	4	6
Non-Government Schools	357	351	279	311	32	11
<b>Total</b>	<b>2425</b>	<b>2568</b>	<b>93</b>	<b>98</b>	<b>5</b>	<b>6</b>