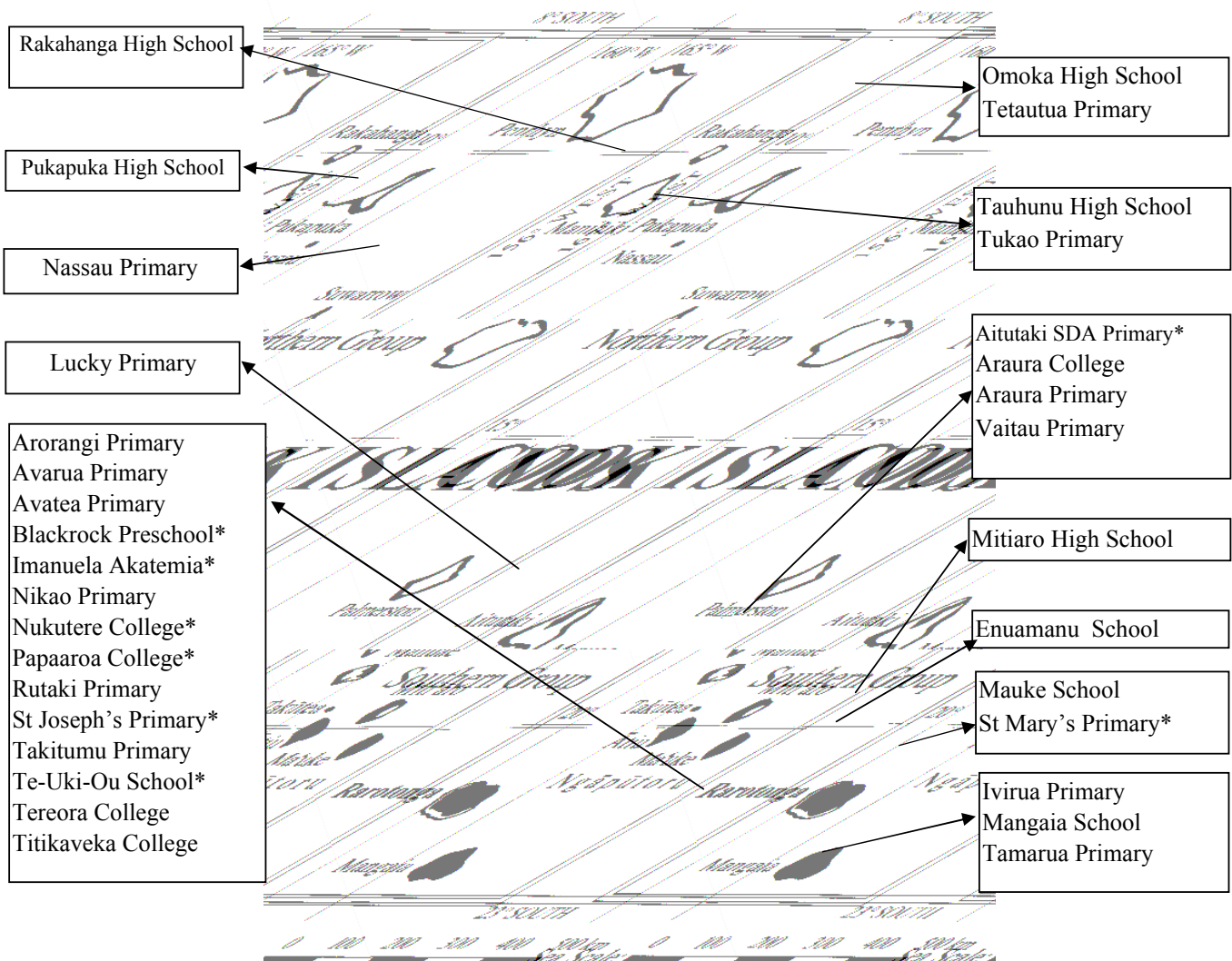


COOK ISLANDS SCHOOLS

DISTRIBUTION OF SCHOOLS

The Cook Islands consists of 15 islands. Rarotonga is the main island in terms of population and economic activity. The Southern Group, which excludes Rarotonga in this digest, consists of 7 islands, 2 of which (Manuae and Takutea) are not permanently populated. The least populated region is the Northern Group. The group consists of 7 islands with only Suvarrow lacking permanent population. Schools are established on all 12 permanently populated islands. All 33 schools in the Cook Islands are co-educational. There are 14 schools on Rarotonga, 11 in the Southern Group and 8 in the Northern Group.

MAP OF COOK ISLANDS SCHOOLS



*Church or Private Schools

STATUS OF SCHOOLS

The Government has established schools on all twelve permanently inhabited islands. "Private " is used to denote a non-government school neither owned nor operated by a religious organisation. The two private schools, Blackrock Preschool and Te-Uki-Ou Primary, are located on Rarotonga. There are also four Church schools on Rarotonga. Two are administered by the Catholic Church (St Joseph's and Nukutere), one by the Seventh Day Adventist Church (Papaaroa) and one by the Assembly Of God Church (Imanuela Akatemia). The Catholic Church also administers a primary school (St Mary's) on Mauke and the SDA Church administers a primary school (Aitutaki SDA) on Aitutaki.

STATUS OF SCHOOLS BY REGION

| Status | Rarotonga | Southern Grp | Northern Grp | Total |
|--------------|-----------|--------------|--------------|-----------|
| Government | 8 | 9 | 8 | 25 |
| Church | 4 | 2 | 0 | 6 |
| Private | 2 | 0 | 0 | 2 |
| Total | 14 | 11 | 8 | 33 |

TEACHERS AND STUDENTS BY SCHOOL STATUS

| Status | Schools | Teachers | | | Students | | | P-T Ratio |
|--------------|-----------|-----------|------------|------------|-------------|-------------|-------------|-----------|
| | | Male | Female | Total | Male | Female | Total | |
| Church | 6 | 12 | 28 | 40 | 322 | 288 | 610 | 15 |
| Government | 25 | 61 | 169 | 230 | 1976 | 1853 | 3829 | 17 |
| Private | 2 | 2 | 13 | 15 | 99 | 93 | 192 | 13 |
| Total | 33 | 75 | 210 | 285 | 2397 | 2234 | 4631 | 16 |

STUDENT : SCHOOL RATIOS BY ISLAND

| Island | Schools | Students | Student/Sch |
|--------------|-----------|-------------|-------------|
| Aitutaki | 4 | 570 | 143 |
| Atiu | 1 | 196 | 196 |
| Mangaia | 3 | 236 | 79 |
| Manihiki | 2 | 135 | 68 |
| Mauke | 2 | 152 | 76 |
| Mitiaro | 1 | 73 | 73 |
| Nassau | 1 | 35 | 35 |
| Palmerston | 1 | 26 | 26 |
| Penrhyn | 2 | 96 | 48 |
| Pukapuka | 1 | 233 | 233 |
| Rakahanga | 1 | 32 | 32 |
| Rarotonga | 14 | 2847 | 203 |
| Total | 33 | 4631 | 140 |

LEVELS OF SCHOOL

PRE-SCHOOL students are children aged from 3 years 6 months up to 4 years 11 months inclusive who are voluntarily enrolled for pre-school instruction.

PRIMARY students are children who are enrolled for instruction at Grade 1 - 6 level. Attendance is compulsory from the age of 5. The expected age range is from 5 to 10 years if a child spends one year in each grade.

SECONDARY students are children and young adults who are enrolled for instruction at Form 1 - 7 level. Attendance is compulsory until the end of the year in which a student turns 15 years of age.

| LEVELS | RANGE | SCHOOLS | NAME OF SCHOOLS |
|--------------------------------|------------------|---------|---|
| Preschool only | PreS | 1 | Blackrock |
| Preschool & Primary only | PreS - G3 | 1 | Tamarua |
| | PreS - G6 | 7 | Takitumu, Rutaki, St Joseph's, Araura Primary, Vaitau Aitutaki SDA, Ivirua |
| Preschool, Primary & Secondary | PreS - F2 | 5 | Avarua, Nikao, Te-Uki-Ou, Arorangi, St Mary's |
| | PreS - F3 | 2 | Lucky School, Rakahanga |
| | PreS - Snr Lvl 1 | 6 | Mitiaro, Pukapuka, Omoka, Nassau, Tauhunu, Tetautua |
| | PreS - Snr Lvl 2 | 1 | Tukao |
| | PreS - Snr Lvl 3 | 3 | Mangaia School, Enuamanu School, Mauke School |
| Primary & Secondary only | G1 - F2 | 1 | Avatea |
| | G1 - F4 | 1 | Papaaroa College |
| | G1 - SL3 | 1 | Imanuela Akatemia |
| Secondary only | F1 - Snr Lvl 1 | 2 | Titikaveka College, Nukutere College |
| | F1 - Snr Lvl 2 | 1 | Araura College |
| | F3 - Snr Lvl 3 | 1 | Tereora College |

| Schools with : | Rarotonga | Sth Group | Nth Group | Total |
|-------------------|-----------|-----------|-----------|-------|
| Pre-school pupils | 8 | 10 | 8 | 26 |
| Primary pupils | 10 | 10 | 8 | 28 |
| Secondary pupils | 10 | 6 | 8 | 24 |

STUDENT ENROLMENTS

COMPARISON OF 2004 ENROLMENTS WITH 1996 AND 2003

| DISTRICT | 1996 | 1997 | 1998 | 1999 | 2000 | 2001 | 2002 | 2003 | 2004 | 1996/2004 Change | 1996/2004 % Change | 2003/2004 Change | 2003/2004 % Change |
|--------------|-------------|-------------|-------------|-------------|-------------|-------------|-------------|-------------|-------------|---------------------|-----------------------|---------------------|-----------------------|
| Aitutaki | 855 | 763 | 726 | 710 | 651 | 642 | 595 | 560 | 570 | -285 | -33% | 10 | 1.8% |
| Atiu | 316 | 283 | 251 | 216 | 200 | 196 | 186 | 195 | 196 | -120 | -38% | 1 | 0.5% |
| Mangaia | 378 | 357 | 341 | 308 | 275 | 266 | 257 | 245 | 236 | -142 | -38% | -9 | -3.7% |
| Manihiki | 171 | 178 | 41 | 124 | 121 | 129 | 147 | 154 | 135 | -36 | -21% | -19 | -12.3% |
| Mauke | 249 | 233 | 239 | 215 | 202 | 189 | 177 | 174 | 152 | -97 | -39% | -22 | -12.6% |
| Mitiaro | 100 | 95 | 80 | 80 | 75 | 68 | 75 | 87 | 73 | -27 | -27% | -14 | -16.1% |
| Nassau | 29 | 30 | 42 | 38 | 37 | 38 | 26 | 28 | 35 | 6 | 21% | 7 | 25.0% |
| Palmerston | 10 | 3 | 0 | 12 | 0 | 9 | 17 | 23 | 26 | 16 | 160% | 3 | 13.0% |
| Penrhyn | 195 | 171 | 166 | 141 | 138 | 124 | 124 | 118 | 96 | -99 | -51% | -22 | -18.6% |
| Pukapuka | 268 | 254 | 251 | 258 | 264 | 249 | 219 | 207 | 233 | -35 | -13% | 26 | 12.6% |
| Rakahanga | 58 | 67 | 63 | 46 | 31 | 38 | 40 | 38 | 32 | -26 | -45% | -6 | -15.8% |
| Rarotonga | 2931 | 2801 | 2750 | 2619 | 2554 | 2709 | 2805 | 2783 | 2847 | -84 | -3% | 64 | 2.3% |
| Total | 5560 | 5235 | 4950 | 4767 | 4548 | 4657 | 4668 | 4612 | 4631 | -929 | -17% | 19 | 0.4% |

| REGION | 1996 | 1997 | 1998 | 1999 | 2000 | 2001 | 2002 | 2003 | 2004 | 1996/2004 Change | 1996/2004 % Change | 2003/2004 Change | 2003/2004 % Change |
|----------------|------|------|------|------|------|------|------|------|------|---------------------|-----------------------|---------------------|-----------------------|
| Northern Group | 731 | 703 | 563 | 619 | 591 | 587 | 573 | 568 | 557 | -174 | -24% | -11 | -1.9% |
| Rarotonga | 2931 | 2801 | 2750 | 2619 | 2554 | 2709 | 2805 | 2783 | 2847 | -84 | -3% | 64 | 2.3% |
| Southern Group | 1898 | 1731 | 1637 | 1529 | 1403 | 1361 | 1290 | 1261 | 1227 | -671 | -35% | -34 | -2.7% |

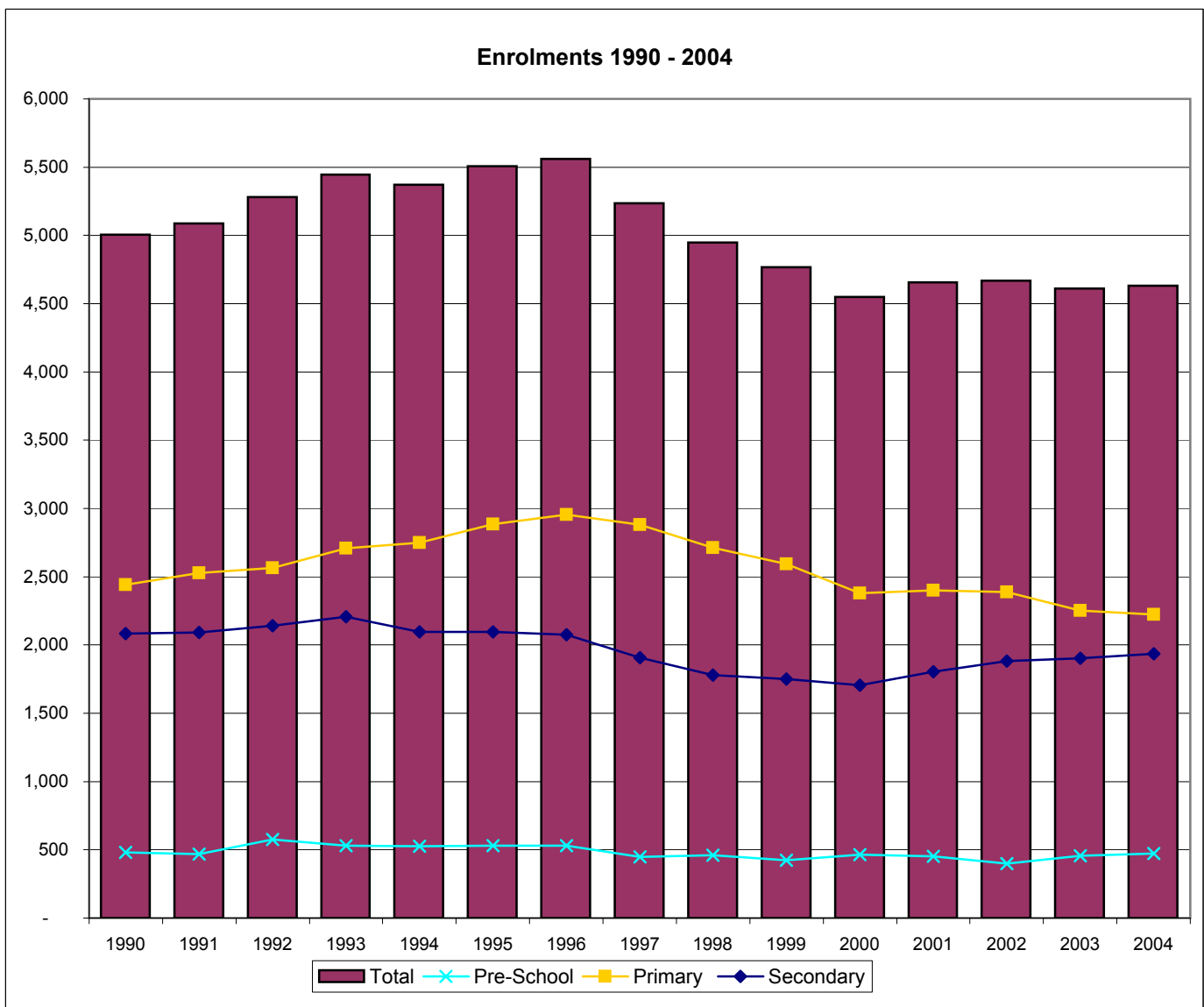
| SCHOOL STATUS | 1996 | 1997 | 1998 | 1999 | 2000 | 2001 | 2002 | 2003 | 2004 | 1996/2004 Change | 1996/2004 % Change | 2003/2004 Change | 2003/2004 % Change |
|----------------|------|------|------|------|------|------|------|------|------|---------------------|-----------------------|---------------------|-----------------------|
| Government | 4763 | 4480 | 4219 | 4054 | 3861 | 3970 | 3928 | 3843 | 3829 | -934 | -20% | -14 | -0.4% |
| Non-government | 797 | 755 | 731 | 713 | 687 | 687 | 740 | 769 | 802 | 5 | 1% | 33 | 4.3% |

1990-2004 ENROLMENTS BY LEVEL

| Year | Pre-School | Primary | Secondary | Total |
|----------------|------------|--------------|--------------|--------------|
| 1990 | 480 | 2,442 | 2,082 | 5,004 |
| 1991 | 467 | 2,526 | 2,093 | 5,086 |
| 1992 | 575 | 2,564 | 2,143 | 5,282 |
| 1993 | 530 | 2,708 | 2,208 | 5,446 |
| 1994 | 527 | 2,750 | 2,094 | 5,371 |
| 1995 | 529 | 2,884 | 2,095 | 5,508 |
| 1996 | 530 | 2,956 | 2,074 | 5,560 |
| 1997 | 447 | 2,882 | 1,906 | 5,235 |
| 1998 | 460 | 2,711 | 1,779 | 4,950 |
| 1999 | 422 | 2,594 | 1,751 | 4,767 |
| 2000 | 465 | 2,379 | 1,704 | 4,548 |
| 2001 | 451 | 2,402 | 1,804 | 4,657 |
| 2002 | 399 | 2,388 | 1,881 | 4,668 |
| 2003 | 457 | 2,254 | 1,901 | 4,612 |
| 2004 | 472 | 2,225 | 1,934 | 4,631 |
| Average | 481 | 2,578 | 1,963 | 5,022 |

Data for 1995 to 2004 is derived from the EMIS. Data from 1990 to 1994 is derived from the March Monthly School Returns.

Since 1996 there has been a 58(11%) decrease in preschool rolls, a 731(25%) decrease in primary rolls and a 140(7%) decrease in secondary rolls. The overall decrease since 1996 is 929(17%).



ENROLMENTS BY LEVEL AND GENDER

| ISLAND | SCHOOL | Students | | | | Pre-school | | Primary | | Secondary | | Total | |
|--------------------|--------------------------|-------------|-------------|-------------|------------|------------|-------------|-------------|-------------|------------|-------------|-----------|---------|
| | | PreS | Prim | Sec | Total | Male | Female | Male | Female | Male | Female | Female | %Female |
| Aitutaki | Aitutaki SDA | 10 | 56 | 0 | 66 | 7 | 3 | 29 | 27 | 0 | 0 | 30 | 45.5 |
| | Araura College | 0 | 0 | 260 | 260 | 0 | 0 | 0 | 0 | 132 | 128 | 128 | 49.2 |
| | Araura Primary | 26 | 143 | 0 | 169 | 12 | 14 | 71 | 72 | 0 | 0 | 86 | 50.9 |
| | Vaitau Primary | 12 | 63 | 0 | 75 | 6 | 6 | 29 | 34 | 0 | 0 | 40 | 53.3 |
| Atiu | Enuamanu School | 23 | 93 | 80 | 196 | 13 | 10 | 41 | 52 | 32 | 48 | 110 | 56.1 |
| Mangaia | Ivirua Primary | 2 | 23 | 0 | 25 | 2 | 0 | 10 | 13 | 0 | 0 | 13 | 52.0 |
| | Mangaia School | 10 | 80 | 103 | 193 | 5 | 5 | 40 | 40 | 50 | 53 | 98 | 51 |
| | Tamarua Primary | 2 | 16 | 0 | 18 | 0 | 2 | 8 | 8 | 0 | 0 | 10 | 56 |
| Manihiki | Tauhunu High School | 12 | 30 | 34 | 76 | 5 | 7 | 15 | 15 | 18 | 16 | 38 | 50 |
| | Tukao Primary | 4 | 30 | 25 | 59 | 3 | 1 | 21 | 9 | 10 | 15 | 25 | 42 |
| Mauke | Mauke School | 14 | 32 | 61 | 107 | 6 | 8 | 12 | 20 | 32 | 29 | 57 | 53 |
| | St Mary's Primary | 3 | 27 | 15 | 45 | 2 | 1 | 19 | 8 | 10 | 5 | 14 | 31 |
| Mitiaro | Mitiaro High School | 7 | 45 | 21 | 73 | 2 | 5 | 26 | 19 | 15 | 6 | 30 | 41 |
| Nassau | Nassau Primary | 3 | 16 | 16 | 35 | 3 | 0 | 12 | 4 | 12 | 4 | 8 | 23 |
| Palmerston | Lucky School | 9 | 13 | 4 | 26 | 6 | 3 | 6 | 7 | 1 | 3 | 13 | 50 |
| Penryhn | Omoka High School | 12 | 42 | 26 | 80 | 6 | 6 | 21 | 21 | 12 | 14 | 41 | 51 |
| | Tetautua Primary | 2 | 9 | 5 | 16 | 0 | 2 | 6 | 3 | 3 | 2 | 7 | 44 |
| Pukapuka | Pukapuka High School | 47 | 113 | 73 | 233 | 26 | 21 | 67 | 46 | 42 | 31 | 98 | 42 |
| Rakahanga | Rakahanga High school | 5 | 18 | 9 | 32 | 3 | 2 | 9 | 9 | 5 | 4 | 15 | 47 |
| Rarotonga | Arurangi Primary School | 12 | 116 | 38 | 166 | 6 | 6 | 58 | 58 | 16 | 22 | 86 | 52 |
| | Avarua Primary | 75 | 336 | 120 | 531 | 37 | 38 | 172 | 164 | 60 | 60 | 262 | 49 |
| | Avatea Primary | 0 | 298 | 105 | 403 | 0 | 0 | 154 | 144 | 54 | 51 | 195 | 48 |
| | Blackrock Pre-school | 26 | 0 | 0 | 26 | 12 | 14 | 0 | 0 | 0 | 0 | 14 | 54 |
| | Imanuela Akademia School | 0 | 30 | 21 | 51 | 0 | 0 | 16 | 14 | 9 | 12 | 26 | 51 |
| | Nikao Primary | 34 | 104 | 25 | 163 | 19 | 15 | 54 | 50 | 17 | 8 | 73 | 45 |
| | Nukutere College | 0 | 0 | 173 | 173 | 0 | 0 | 0 | 0 | 96 | 77 | 77 | 45 |
| | Papaaroa College | 0 | 60 | 30 | 90 | 0 | 0 | 26 | 34 | 15 | 15 | 49 | 54 |
| | Rutaki Primary | 16 | 31 | 0 | 47 | 12 | 4 | 21 | 10 | 0 | 0 | 14 | 30 |
| | St Joseph's Primary | 22 | 163 | 0 | 185 | 14 | 8 | 79 | 84 | 0 | 0 | 92 | 50 |
| | Takitumu Primary | 54 | 125 | 0 | 179 | 27 | 27 | 66 | 59 | 0 | 0 | 86 | 48 |
| | Tereora College | 0 | 0 | 507 | 507 | 0 | 0 | 0 | 0 | 262 | 245 | 245 | 48 |
| | Te-Uki-Ou School | 30 | 113 | 23 | 166 | 18 | 12 | 55 | 58 | 14 | 9 | 79 | 48 |
| Titikaveka College | 0 | 0 | 160 | 160 | 0 | 0 | 0 | 0 | 85 | 75 | 75 | 47 | |
| Total | 472 | 2225 | 1934 | 4631 | 252 | 220 | 1143 | 1082 | 1002 | 932 | 2234 | 48 | |

| ISLAND | Students | | | | Pre-school | | Primary | | Secondary | | Total | |
|--------------|------------|-------------|-------------|-------------|------------|-----------|-------------|-----------|------------|-----------|-------------|-----------|
| | PreS | Prim | Sec | Total | Female | %Female | Female | %Female | Female | %Female | Female | %Female |
| Aitutaki | 48 | 262 | 260 | 570 | 23 | 48 | 133 | 51 | 128 | 49 | 284 | 50 |
| Atiu | 23 | 93 | 80 | 196 | 10 | 43 | 52 | 56 | 48 | 60 | 110 | 56 |
| Mangaia | 14 | 119 | 103 | 236 | 7 | 50 | 61 | 51 | 53 | 51 | 121 | 51 |
| Manihiki | 16 | 60 | 59 | 135 | 8 | 50 | 24 | 40 | 31 | 53 | 63 | 47 |
| Mauke | 17 | 59 | 76 | 152 | 9 | 53 | 28 | 47 | 34 | 45 | 71 | 47 |
| Mitiaro | 7 | 45 | 21 | 73 | 5 | 71 | 19 | 42 | 6 | 29 | 30 | 41 |
| Nassau | 3 | 16 | 16 | 35 | 0 | 0 | 4 | 25 | 4 | 25 | 8 | 23 |
| Palmerston | 9 | 13 | 4 | 26 | 3 | 0 | 7 | 54 | 3 | 75 | 13 | 50 |
| Penryhn | 14 | 51 | 31 | 96 | 8 | 57 | 24 | 47 | 16 | 52 | 48 | 50 |
| Pukapuka | 47 | 113 | 73 | 233 | 21 | 45 | 46 | 41 | 31 | 42 | 98 | 42 |
| Rakahanga | 5 | 18 | 9 | 32 | 2 | 40 | 9 | 50 | 4 | 44 | 15 | 47 |
| Rarotonga | 269 | 1376 | 1202 | 2847 | 124 | 46 | 675 | 49 | 574 | 48 | 1373 | 48 |
| Total | 472 | 2225 | 1934 | 4631 | 220 | 47 | 1082 | 49 | 932 | 48 | 2234 | 48 |

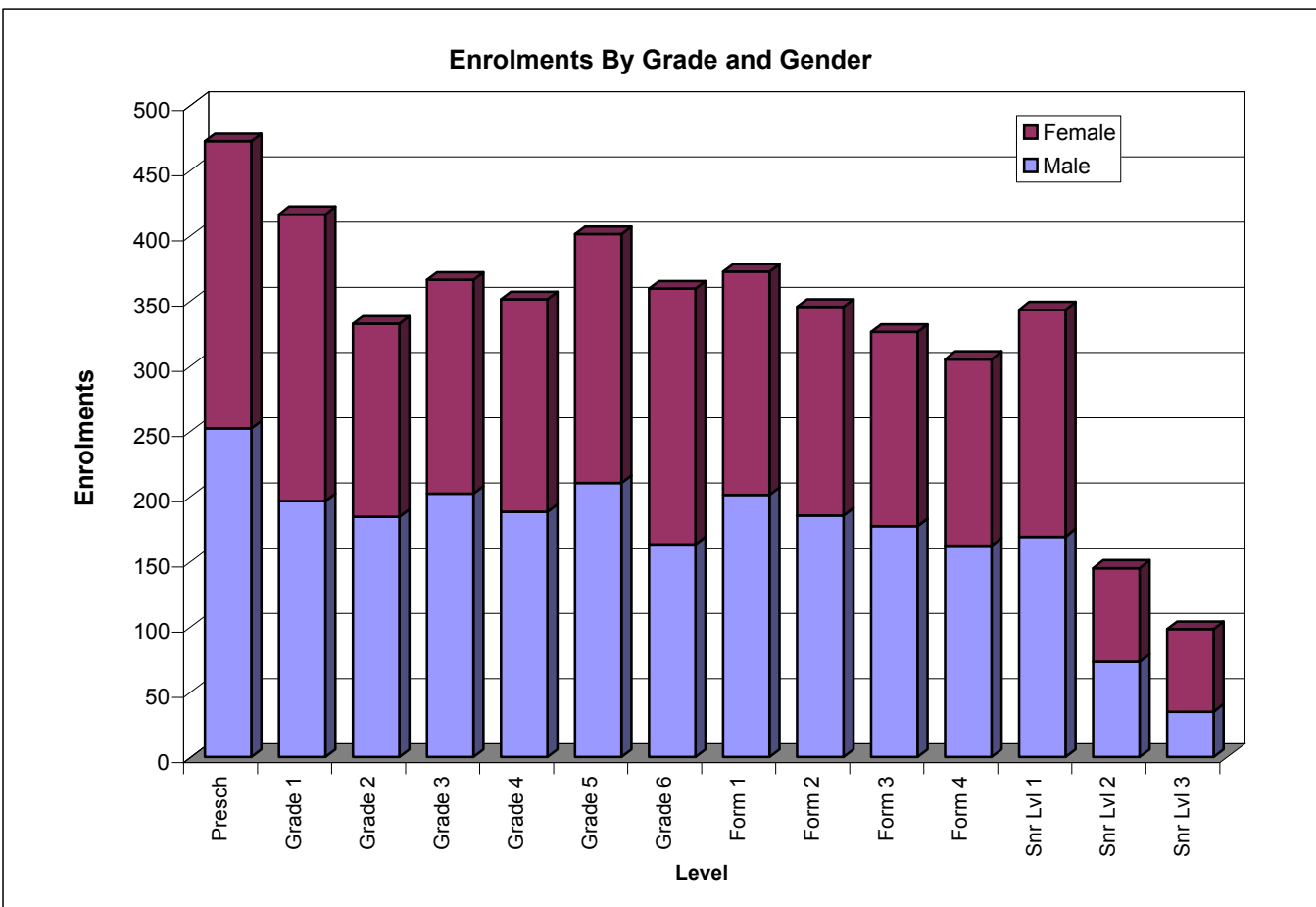
| REGION | Students | | | | Pre-school | | Primary | | Secondary | | Total | |
|----------------|------------|-------------|-------------|-------------|------------|-----------|-------------|-----------|------------|-----------|-------------|-----------|
| | PreS | Prim | Sec | Total | Female | %Female | Female | %Female | Female | %Female | Female | %Female |
| Northern Group | 94 | 271 | 192 | 557 | 42 | 45 | 114 | 42 | 89 | 46 | 245 | 44 |
| Rarotonga | 269 | 1376 | 1202 | 2847 | 124 | 46 | 675 | 49 | 574 | 48 | 1373 | 48 |
| Southern Group | 109 | 578 | 540 | 1227 | 54 | 50 | 293 | 51 | 269 | 50 | 616 | 50 |
| Total | 472 | 2225 | 1934 | 4631 | 220 | 47 | 1082 | 49 | 932 | 48 | 2234 | 48 |

| STATUS | Students | | | | Pre-school | | Primary | | Secondary | | Total | |
|----------------|------------|-------------|-------------|-------------|------------|-----------|-------------|-----------|------------|-----------|-------------|-----------|
| | PreS | Prim | Sec | Total | Female | %Female | Female | %Female | Female | %Female | Female | %Female |
| Government | 381 | 1776 | 1672 | 3829 | 174 | 46 | 887 | 50 | 788 | 47 | 1883 | 49 |
| Non-government | 91 | 449 | 262 | 802 | 46 | 51 | 195 | 43 | 144 | 55 | 351 | 44 |
| Total | 472 | 2225 | 1934 | 4631 | 220 | 47 | 1082 | 49 | 932 | 48 | 2234 | 48 |

ENROLMENTS BY GRADE AND GENDER

| Grade/Form | Male | Female | %Female | Total |
|--------------|-------------|-------------|-----------|-------------|
| Presch | 252 | 220 | 47 | 472 |
| Grade 1 | 196 | 220 | 53 | 416 |
| Grade 2 | 184 | 148 | 45 | 332 |
| Grade 3 | 202 | 164 | 45 | 366 |
| Grade 4 | 188 | 163 | 46 | 351 |
| Grade 5 | 210 | 191 | 48 | 401 |
| Grade 6 | 163 | 196 | 55 | 359 |
| Form 1 | 201 | 171 | 46 | 372 |
| Form 2 | 185 | 160 | 46 | 345 |
| Form 3 | 177 | 149 | 46 | 326 |
| Form 4 | 162 | 143 | 47 | 305 |
| Snr Lvl 1 | 169 | 174 | 51 | 343 |
| Snr Lvl 2 | 73 | 72 | 50 | 145 |
| Snr Lvl 3 | 35 | 63 | 64 | 98 |
| Total | 2397 | 2234 | 48 | 4631 |

Girls make up 47% and 49% of the preschool and primary school (G1-G6) enrolment respectively. 48% secondary (F1-F7) students are girls who dominate at the senior secondary (SL1-F7) level accounting for 53% of the enrolment.



ENROLMENTS BY GRADE AND ISLAND

| ISLAND | Schools | G1 | G2 | G3 | G4 | G5 | G6 | F1 | F2 | F3 | F4 | SL1 | SL2 | SL3 | PreSch | Total |
|--------------|-----------|------------|------------|------------|------------|------------|------------|------------|------------|------------|------------|------------|------------|-----------|------------|-------------|
| Aitutaki | 4 | 49 | 31 | 36 | 52 | 50 | 44 | 58 | 41 | 48 | 48 | 47 | 18 | 0 | 48 | 570 |
| Atiu | 1 | 14 | 15 | 15 | 14 | 13 | 22 | 15 | 16 | 16 | 16 | 13 | 3 | 1 | 23 | 196 |
| Mangaia | 3 | 19 | 22 | 27 | 12 | 23 | 16 | 19 | 9 | 16 | 18 | 18 | 13 | 10 | 14 | 236 |
| Manihiki | 2 | 12 | 11 | 12 | 9 | 12 | 4 | 10 | 11 | 12 | 13 | 13 | 0 | 0 | 16 | 135 |
| Mauke | 2 | 7 | 8 | 14 | 10 | 9 | 11 | 10 | 14 | 17 | 5 | 26 | 3 | 1 | 17 | 152 |
| Mitiaro | 1 | 11 | 11 | 8 | 5 | 7 | 3 | 3 | 3 | 2 | 8 | 5 | 0 | 0 | 7 | 73 |
| Nassau | 1 | 1 | 4 | 3 | 2 | 4 | 2 | 4 | 4 | 6 | 0 | 2 | 0 | 0 | 3 | 35 |
| Palmerston | 1 | 5 | 1 | 3 | 1 | 3 | 0 | 2 | 1 | 1 | 0 | 0 | 0 | 0 | 9 | 26 |
| Penrhyn | 2 | 9 | 10 | 9 | 5 | 13 | 5 | 6 | 9 | 4 | 9 | 3 | 0 | 0 | 14 | 96 |
| Pukapuka | 1 | 16 | 24 | 18 | 12 | 23 | 20 | 11 | 17 | 15 | 12 | 18 | 0 | 0 | 47 | 233 |
| Rakahanga | 1 | 5 | 3 | 2 | 2 | 3 | 3 | 0 | 7 | 2 | 0 | 0 | 0 | 0 | 5 | 32 |
| Rarotonga | 14 | 268 | 192 | 219 | 227 | 241 | 229 | 234 | 213 | 187 | 176 | 198 | 108 | 86 | 269 | 2847 |
| Total | 33 | 416 | 332 | 366 | 351 | 401 | 359 | 372 | 345 | 326 | 305 | 343 | 145 | 98 | 472 | 4631 |

ENROLMENTS BY GRADE AND REGION

| REGION | Schools | G1 | G2 | G3 | G4 | G5 | G6 | F1 | F2 | F3 | F4 | SL1 | SL2 | SL3 | PreSch | Total |
|-----------|---------|-----|-----|-----|-----|-----|-----|-----|-----|-----|-----|-----|-----|-----|--------|-------|
| Nth Group | 8 | 48 | 53 | 47 | 31 | 58 | 34 | 33 | 49 | 40 | 34 | 36 | 0 | 0 | 94 | 557 |
| Rarotonga | 14 | 268 | 192 | 219 | 227 | 241 | 229 | 234 | 213 | 187 | 176 | 198 | 108 | 86 | 269 | 2847 |
| Sth Group | 11 | 100 | 87 | 100 | 93 | 102 | 96 | 105 | 83 | 99 | 95 | 109 | 37 | 12 | 109 | 1227 |

ENROLMENTS BY GRADE AND SCHOOL STATUS

| STATUS | Schools | G1 | G2 | G3 | G4 | G5 | G6 | F1 | F2 | F3 | F4 | SL1 | SL2 | SL3 | PreSch | Total |
|------------|---------|-----|-----|-----|-----|-----|-----|-----|-----|-----|-----|-----|-----|-----|--------|-------|
| Government | 25 | 315 | 265 | 290 | 271 | 337 | 298 | 315 | 283 | 273 | 270 | 291 | 144 | 96 | 381 | 3829 |
| Non-govt | 8 | 101 | 67 | 76 | 80 | 64 | 61 | 57 | 62 | 53 | 35 | 52 | 1 | 2 | 91 | 802 |

STUDENT REPETITION RATES AT EACH GRADE

| Year | Roll | REPEATERS | | OVERAGE | |
|--------------|-------------|-----------|------------|------------|-----------|
| | | Number | % | Number | % |
| Pre Sch | 472 | - | - | 0 | 0 |
| Grade 1 | 416 | 59 | 14.2 | 34 | 8 |
| Grade 2 | 332 | 0 | 0.0 | 44 | 13 |
| Grade 3 | 366 | 0 | 0.0 | 35 | 10 |
| Grade 4 | 351 | 1 | 0.3 | 34 | 10 |
| Grade 5 | 401 | 0 | 0.0 | 44 | 11 |
| Grade 6 | 359 | 3 | 0.8 | 48 | 13 |
| Form 1 | 372 | 0 | 0.0 | 43 | 12 |
| Form 2 | 345 | 0 | 0.0 | 45 | 13 |
| Form 3 | 326 | 0 | 0.0 | 58 | 18 |
| Form 4 | 305 | 0 | 0.0 | 48 | 16 |
| SL1 | 343 | 13 | 3.8 | 23 | 7 |
| SL2 | 145 | 12 | 8.3 | 17 | 12 |
| SL3 | 98 | 0 | 0.0 | 6 | 6 |
| Total | 4631 | 88 | 1.9 | 479 | 10 |

The overage data is based on the assumption that, on January 1, a Grade 1 student should be 5, a Grade 2 student should be 6 and each succeeding Grade student should be one year older. Those older than the assumed age for the grade are deemed to be overage. Compared to the year 2003 there has been a decrease in overage students. Total numbers have decreased from 826 to 479.

The number of students repeating at each level is directly recorded on each school's 2004 EMIS survey form by the school's principal.

ENROLMENTS BY GRADE/FORM

| School | PreSch | Gr 1 | Gr 2 | Gr 3 | Gr 4 | Gr 5 | Gr 6 | F 1 | F 2 | F 3 | F 4 | SL1 | SL2 | SL3 | Total |
|--------------------------|------------|------------|------------|------------|------------|------------|------------|------------|------------|------------|------------|------------|------------|-----------|-------------|
| Blackrock Pre-school | 26 | 0 | 0 | 0 | 0 | 0 | 0 | 0 | 0 | 0 | 0 | 0 | 0 | 0 | 26 |
| Te-Uki-Ou School | 30 | 21 | 18 | 19 | 22 | 18 | 15 | 12 | 11 | 0 | 0 | 0 | 0 | 0 | 166 |
| Avarua Primary | 75 | 52 | 40 | 64 | 59 | 60 | 61 | 65 | 55 | 0 | 0 | 0 | 0 | 0 | 531 |
| Avatea Primary | 0 | 48 | 40 | 41 | 46 | 66 | 57 | 58 | 47 | 0 | 0 | 0 | 0 | 0 | 403 |
| Takitumu Primary | 54 | 22 | 20 | 15 | 23 | 17 | 28 | 0 | 0 | 0 | 0 | 0 | 0 | 0 | 179 |
| Nikao Primary | 34 | 17 | 15 | 21 | 15 | 21 | 15 | 11 | 14 | 0 | 0 | 0 | 0 | 0 | 163 |
| Rutaki Primary | 16 | 4 | 5 | 7 | 5 | 6 | 4 | 0 | 0 | 0 | 0 | 0 | 0 | 0 | 47 |
| St Joseph's Primary | 22 | 43 | 25 | 24 | 24 | 23 | 24 | 0 | 0 | 0 | 0 | 0 | 0 | 0 | 185 |
| Imanuela Akatemia School | 0 | 6 | 6 | 5 | 8 | 5 | 0 | 4 | 6 | 5 | 1 | 2 | 1 | 2 | 51 |
| Arorangi Primary School | 12 | 37 | 17 | 13 | 17 | 17 | 15 | 22 | 16 | 0 | 0 | 0 | 0 | 0 | 166 |
| Tereora College | 0 | 0 | 0 | 0 | 0 | 0 | 0 | 0 | 0 | 98 | 112 | 106 | 107 | 84 | 507 |
| Titikaveka College | 0 | 0 | 0 | 0 | 0 | 0 | 0 | 28 | 27 | 36 | 29 | 40 | 0 | 0 | 160 |
| Nukutere College | 0 | 0 | 0 | 0 | 0 | 0 | 0 | 24 | 29 | 42 | 28 | 50 | 0 | 0 | 173 |
| Papaaroa College | 0 | 18 | 6 | 10 | 8 | 8 | 10 | 10 | 8 | 6 | 6 | 0 | 0 | 0 | 90 |
| Amuri Primary | 0 | 0 | 0 | 0 | 0 | 0 | 0 | 0 | 0 | 0 | 0 | 0 | 0 | 0 | 0 |
| Araura Primary | 26 | 28 | 15 | 20 | 25 | 33 | 22 | 0 | 0 | 0 | 0 | 0 | 0 | 0 | 169 |
| Vaitau Primary | 12 | 11 | 9 | 6 | 14 | 9 | 14 | 0 | 0 | 0 | 0 | 0 | 0 | 0 | 75 |
| Aitutaki SDA | 10 | 10 | 7 | 10 | 13 | 8 | 8 | 0 | 0 | 0 | 0 | 0 | 0 | 0 | 66 |
| Araura College | 0 | 0 | 0 | 0 | 0 | 0 | 0 | 58 | 41 | 48 | 48 | 47 | 18 | 0 | 260 |
| Ivirua Primary | 2 | 6 | 4 | 4 | 3 | 4 | 2 | 0 | 0 | 0 | 0 | 0 | 0 | 0 | 25 |
| Tamarua Primary | 2 | 5 | 4 | 7 | 0 | 0 | 0 | 0 | 0 | 0 | 0 | 0 | 0 | 0 | 18 |
| Mangaia School | 10 | 8 | 14 | 16 | 9 | 19 | 14 | 19 | 9 | 16 | 18 | 18 | 13 | 10 | 193 |
| Enuamanu School | 23 | 14 | 15 | 15 | 14 | 13 | 22 | 15 | 16 | 16 | 16 | 13 | 3 | 1 | 196 |
| St Mary's Primary | 3 | 3 | 5 | 8 | 5 | 2 | 4 | 7 | 8 | 0 | 0 | 0 | 0 | 0 | 45 |
| Mauke School | 14 | 4 | 3 | 6 | 5 | 7 | 7 | 3 | 6 | 17 | 5 | 26 | 3 | 1 | 107 |
| Mitiaro High School | 7 | 11 | 11 | 8 | 5 | 7 | 3 | 3 | 3 | 2 | 8 | 5 | 0 | 0 | 73 |
| Lucky Primary | 9 | 5 | 1 | 3 | 1 | 3 | 0 | 2 | 1 | 1 | 0 | 0 | 0 | 0 | 26 |
| Pukapuka High School | 47 | 16 | 24 | 18 | 12 | 23 | 20 | 11 | 17 | 15 | 12 | 18 | 0 | 0 | 233 |
| Nassau Primary | 3 | 1 | 4 | 3 | 2 | 4 | 2 | 4 | 4 | 6 | 0 | 2 | 0 | 0 | 35 |
| Tukao Primary | 4 | 8 | 4 | 7 | 4 | 5 | 2 | 5 | 7 | 0 | 6 | 7 | 0 | 0 | 59 |
| Tauhunu High School | 12 | 4 | 7 | 5 | 5 | 7 | 2 | 5 | 4 | 12 | 7 | 6 | 0 | 0 | 76 |
| Rakahanga High school | 5 | 5 | 3 | 2 | 2 | 3 | 3 | 0 | 7 | 2 | 0 | 0 | 0 | 0 | 32 |
| Tetautua Primary | 2 | 0 | 2 | 1 | 0 | 5 | 1 | 0 | 2 | 1 | 1 | 1 | 0 | 0 | 16 |
| Omoka High School | 12 | 9 | 8 | 8 | 5 | 8 | 4 | 6 | 7 | 3 | 8 | 2 | 0 | 0 | 80 |
| Total | 472 | 416 | 332 | 366 | 351 | 401 | 359 | 372 | 345 | 326 | 305 | 343 | 145 | 98 | 4631 |

1990 - 2004 ENROLMENTS BY GRADE/FORM

| Year | PreSch | Gr 1 | Gr 2 | Gr 3 | Gr 4 | Gr 5 | Gr 6 | F 1 | F 2 | F 3 | F 4 | F 5C | SL1 | SL2 | SL3 | Total |
|----------------|------------|------------|------------|------------|------------|------------|------------|------------|------------|------------|------------|------------|------------|------------|-----------|--------------|
| 1990 | 480 | 531 | 373 | 388 | 377 | 383 | 390 | 351 | 392 | 382 | 323 | 316 | 215 | 72 | 31 | 5,004 |
| 1991 | 467 | 567 | 392 | 408 | 402 | 390 | 367 | 387 | 357 | 364 | 337 | 318 | 221 | 85 | 24 | 5,086 |
| 1992 | 575 | 649 | 361 | 387 | 391 | 395 | 381 | 385 | 403 | 352 | 343 | 315 | 207 | 109 | 29 | 5,282 |
| 1993 | 530 | 745 | 408 | 387 | 389 | 386 | 393 | 406 | 380 | 381 | 324 | 315 | 243 | 108 | 51 | 5,446 |
| 1994 | 527 | 732 | 485 | 389 | 366 | 388 | 390 | 434 | 331 | 346 | 346 | 279 | 237 | 91 | 30 | 5,371 |
| 1995 | 529 | 736 | 488 | 460 | 430 | 368 | 402 | 369 | 408 | 370 | 306 | 324 | 202 | 96 | 20 | 5,508 |
| 1996 | 530 | 757 | 475 | 488 | 438 | 422 | 376 | 365 | 383 | 365 | 307 | 295 | 235 | 92 | 32 | 5,560 |
| 1997 | 447 | 733 | 433 | 442 | 444 | 445 | 385 | 329 | 343 | 335 | 298 | 272 | 215 | 90 | 24 | 5,235 |
| 1998 | 460 | 686 | 416 | 381 | 414 | 407 | 407 | 355 | 304 | 301 | 284 | 240 | 176 | 93 | 26 | 4,950 |
| 1999 | 422 | 667 | 405 | 397 | 367 | 381 | 377 | 359 | 314 | 277 | 267 | 222 | 183 | 96 | 33 | 4,767 |
| 2000 | 465 | 514 | 366 | 406 | 370 | 353 | 370 | 365 | 343 | 274 | 219 | 216 | 178 | 74 | 35 | 4,548 |
| 2001 | 451 | 504 | 411 | 385 | 374 | 377 | 351 | 353 | 363 | 333 | 244 | 200 | 179 | 110 | 22 | 4,657 |
| 2002 | 399 | 529 | 337 | 405 | 363 | 394 | 360 | 341 | 352 | 332 | 298 | 89 | 285 | 126 | 58 | 4,668 |
| 2003 | 457 | 392 | 371 | 351 | 399 | 354 | 387 | 354 | 332 | 323 | 313 | 0 | 325 | 181 | 73 | 4,612 |
| 2004 | 472 | 416 | 332 | 366 | 351 | 401 | 359 | 372 | 345 | 326 | 305 | 0 | 343 | 145 | 98 | 4,631 |
| Average | 481 | 611 | 404 | 403 | 392 | 390 | 380 | 368 | 357 | 337 | 301 | 227 | 230 | 105 | 39 | 5,022 |

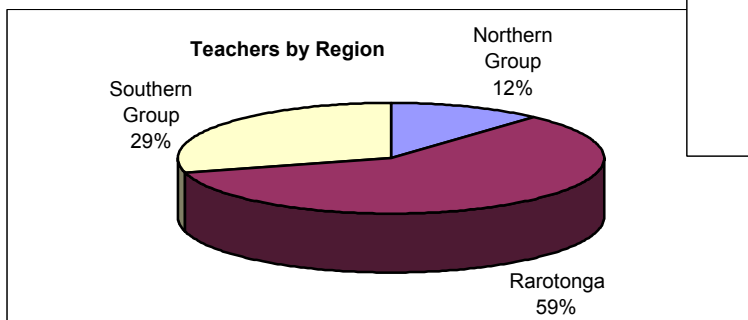
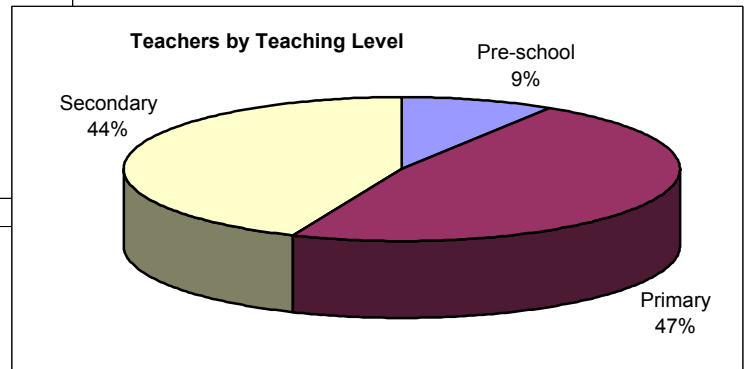
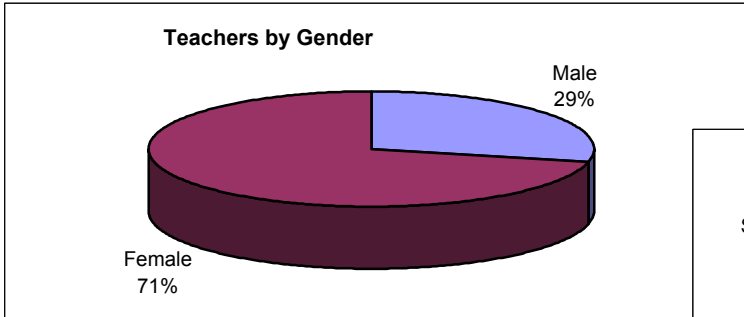
ENROLMENTS BY GRADE, AGE AND GENDER

| Grade/Form | Total | | | | | | | | | | | | | | | | | Total |
|---------------|------------|------------|------------|------------|------------|------------|------------|------------|------------|------------|------------|------------|------------|------------|-----------|-----------|-------------|-------|
| | 4 | 5 | 6 | 7 | 8 | 9 | 10 | 11 | 12 | 13 | 14 | 15 | 16 | 17 | 18 | 19+ | | |
| Presch | 420 | 52 | 0 | 0 | 0 | 0 | 0 | 0 | 0 | 0 | 0 | 0 | 0 | 0 | 0 | 0 | 0 | 472 |
| Grade 1 | 118 | 264 | 32 | 2 | 0 | 0 | 0 | 0 | 0 | 0 | 0 | 0 | 0 | 0 | 0 | 0 | 0 | 416 |
| Grade 2 | 0 | 61 | 227 | 43 | 1 | 0 | 0 | 0 | 0 | 0 | 0 | 0 | 0 | 0 | 0 | 0 | 0 | 332 |
| Grade 3 | 0 | 0 | 53 | 278 | 34 | 1 | 0 | 0 | 0 | 0 | 0 | 0 | 0 | 0 | 0 | 0 | 0 | 366 |
| Grade 4 | 0 | 0 | 0 | 33 | 284 | 30 | 3 | 1 | 0 | 0 | 0 | 0 | 0 | 0 | 0 | 0 | 0 | 351 |
| Grade 5 | 0 | 0 | 0 | 1 | 48 | 308 | 41 | 2 | 0 | 1 | 0 | 0 | 0 | 0 | 0 | 0 | 0 | 401 |
| Grade 6 | 0 | 0 | 0 | 0 | 0 | 41 | 270 | 47 | 1 | 0 | 0 | 0 | 0 | 0 | 0 | 0 | 0 | 359 |
| Form 1 | 0 | 0 | 0 | 0 | 0 | 0 | 38 | 291 | 43 | 0 | 0 | 0 | 0 | 0 | 0 | 0 | 0 | 372 |
| Form 2 | 0 | 0 | 0 | 0 | 0 | 0 | 0 | 37 | 263 | 43 | 2 | 0 | 0 | 0 | 0 | 0 | 0 | 345 |
| Form 3 | 0 | 0 | 0 | 0 | 0 | 0 | 0 | 0 | 38 | 230 | 55 | 2 | 0 | 0 | 1 | 0 | 0 | 326 |
| Form 4 | 0 | 0 | 0 | 0 | 0 | 0 | 0 | 0 | 2 | 34 | 221 | 39 | 9 | 0 | 0 | 0 | 0 | 305 |
| Snr Level 1 | 0 | 0 | 0 | 0 | 0 | 0 | 0 | 0 | 0 | 1 | 42 | 190 | 87 | 18 | 3 | 2 | 0 | 343 |
| Snr Level 2 | 0 | 0 | 0 | 0 | 0 | 0 | 0 | 0 | 0 | 0 | 0 | 18 | 77 | 33 | 13 | 4 | 0 | 145 |
| Snr Level 3 | 0 | 0 | 0 | 0 | 0 | 0 | 0 | 0 | 0 | 0 | 0 | 0 | 10 | 55 | 27 | 6 | 0 | 98 |
| Total | 538 | 377 | 312 | 357 | 367 | 380 | 352 | 378 | 347 | 309 | 320 | 249 | 183 | 106 | 44 | 12 | 4631 | |
| Female | | | | | | | | | | | | | | | | | | |
| Grade/Form | 4 | 5 | 6 | 7 | 8 | 9 | 10 | 11 | 12 | 13 | 14 | 15 | 16 | 17 | 18 | 19+ | Total | |
| Presch | 198 | 22 | 0 | 0 | 0 | 0 | 0 | 0 | 0 | 0 | 0 | 0 | 0 | 0 | 0 | 0 | 220 | |
| Grade 1 | 64 | 143 | 11 | 2 | 0 | 0 | 0 | 0 | 0 | 0 | 0 | 0 | 0 | 0 | 0 | 0 | 220 | |
| Grade 2 | 0 | 30 | 99 | 19 | 0 | 0 | 0 | 0 | 0 | 0 | 0 | 0 | 0 | 0 | 0 | 0 | 148 | |
| Grade 3 | 0 | 0 | 28 | 124 | 11 | 1 | 0 | 0 | 0 | 0 | 0 | 0 | 0 | 0 | 0 | 0 | 164 | |
| Grade 4 | 0 | 0 | 0 | 18 | 135 | 7 | 2 | 1 | 0 | 0 | 0 | 0 | 0 | 0 | 0 | 0 | 163 | |
| Grade 5 | 0 | 0 | 0 | 1 | 32 | 141 | 14 | 2 | 0 | 1 | 0 | 0 | 0 | 0 | 0 | 0 | 191 | |
| Grade 6 | 0 | 0 | 0 | 0 | 0 | 23 | 150 | 22 | 1 | 0 | 0 | 0 | 0 | 0 | 0 | 0 | 196 | |
| Form 1 | 0 | 0 | 0 | 0 | 0 | 0 | 21 | 137 | 13 | 0 | 0 | 0 | 0 | 0 | 0 | 0 | 171 | |
| Form 2 | 0 | 0 | 0 | 0 | 0 | 0 | 0 | 15 | 129 | 16 | 0 | 0 | 0 | 0 | 0 | 0 | 160 | |
| Form 3 | 0 | 0 | 0 | 0 | 0 | 0 | 0 | 0 | 22 | 105 | 21 | 0 | 0 | 0 | 1 | 0 | 149 | |
| Form 4 | 0 | 0 | 0 | 0 | 0 | 0 | 0 | 0 | 2 | 22 | 101 | 13 | 5 | 0 | 0 | 0 | 143 | |
| Snr Level 1 | 0 | 0 | 0 | 0 | 0 | 0 | 0 | 0 | 0 | 1 | 29 | 91 | 41 | 9 | 1 | 2 | 174 | |
| Snr Level 2 | 0 | 0 | 0 | 0 | 0 | 0 | 0 | 0 | 0 | 0 | 0 | 13 | 29 | 18 | 9 | 3 | 72 | |
| Snr Level 3 | 0 | 0 | 0 | 0 | 0 | 0 | 0 | 0 | 0 | 0 | 0 | 0 | 6 | 32 | 19 | 6 | 63 | |
| Total | 262 | 195 | 138 | 164 | 178 | 172 | 187 | 177 | 167 | 145 | 151 | 117 | 81 | 59 | 30 | 11 | 2234 | |
| Male | | | | | | | | | | | | | | | | | | |
| Grade/Form | 4 | 5 | 6 | 7 | 8 | 9 | 10 | 11 | 12 | 13 | 14 | 15 | 16 | 17 | 18 | 19+ | Total | |
| Presch | 222 | 30 | 0 | 0 | 0 | 0 | 0 | 0 | 0 | 0 | 0 | 0 | 0 | 0 | 0 | 0 | 252 | |
| Grade 1 | 54 | 121 | 21 | 0 | 0 | 0 | 0 | 0 | 0 | 0 | 0 | 0 | 0 | 0 | 0 | 0 | 196 | |
| Grade 2 | 0 | 31 | 128 | 24 | 1 | 0 | 0 | 0 | 0 | 0 | 0 | 0 | 0 | 0 | 0 | 0 | 184 | |
| Grade 3 | 0 | 0 | 25 | 154 | 23 | 0 | 0 | 0 | 0 | 0 | 0 | 0 | 0 | 0 | 0 | 0 | 202 | |
| Grade 4 | 0 | 0 | 0 | 15 | 149 | 23 | 1 | 0 | 0 | 0 | 0 | 0 | 0 | 0 | 0 | 0 | 188 | |
| Grade 5 | 0 | 0 | 0 | 0 | 16 | 167 | 27 | 0 | 0 | 0 | 0 | 0 | 0 | 0 | 0 | 0 | 210 | |
| Grade 6 | 0 | 0 | 0 | 0 | 0 | 18 | 120 | 25 | 0 | 0 | 0 | 0 | 0 | 0 | 0 | 0 | 163 | |
| Form 1 | 0 | 0 | 0 | 0 | 0 | 0 | 17 | 154 | 30 | 0 | 0 | 0 | 0 | 0 | 0 | 0 | 201 | |
| Form 2 | 0 | 0 | 0 | 0 | 0 | 0 | 0 | 22 | 134 | 27 | 2 | 0 | 0 | 0 | 0 | 0 | 185 | |
| Form 3 | 0 | 0 | 0 | 0 | 0 | 0 | 0 | 0 | 16 | 125 | 34 | 2 | 0 | 0 | 0 | 0 | 177 | |
| Form 4 | 0 | 0 | 0 | 0 | 0 | 0 | 0 | 0 | 0 | 12 | 120 | 26 | 4 | 0 | 0 | 0 | 162 | |
| Snr Level 1 | 0 | 0 | 0 | 0 | 0 | 0 | 0 | 0 | 0 | 0 | 13 | 99 | 46 | 9 | 2 | 0 | 169 | |
| Snr Level 2 | 0 | 0 | 0 | 0 | 0 | 0 | 0 | 0 | 0 | 0 | 0 | 5 | 48 | 15 | 4 | 1 | 73 | |
| Snr Level 3 | 0 | 0 | 0 | 0 | 0 | 0 | 0 | 0 | 0 | 0 | 0 | 0 | 4 | 23 | 8 | 0 | 35 | |
| Total | 276 | 182 | 174 | 193 | 189 | 208 | 165 | 201 | 180 | 164 | 169 | 132 | 102 | 47 | 14 | 1 | 2397 | |

TEACHERS

TEACHERS BY GENDER, TEACHING LEVEL AND NATIONALITY

| STATUS | Teachers | | | Teaching Level | | | Nationality | |
|----------------|------------|------------|-----------|----------------|------------|------------|-------------|-----------|
| | Total | Female | %Female | Pre-school | Primary | Secondary | Cook-Is | %CIs. |
| Government | 230 | 169 | 73 | 17 | 107 | 106 | 205 | 89 |
| Non-government | 55 | 41 | 75 | 8 | 29 | 18 | 35 | 64 |
| Total | 285 | 210 | 74 | 25 | 136 | 124 | 240 | 84 |

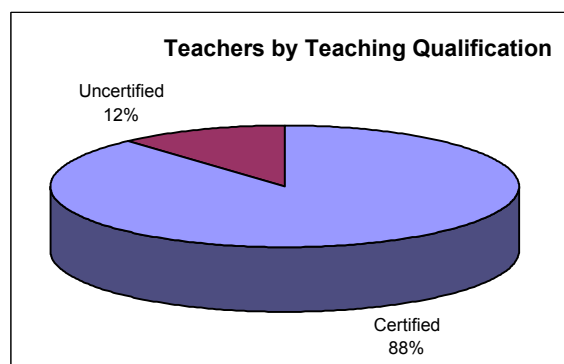
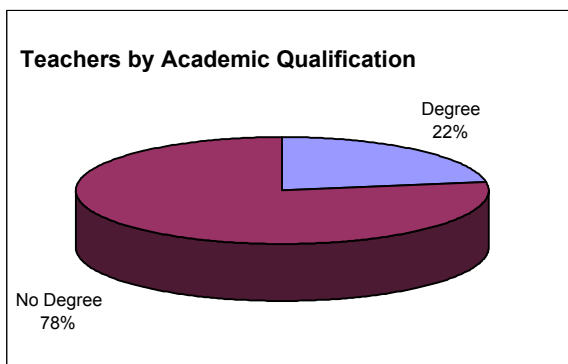


| REGION | Teachers | | | Teaching Level | | | Nationality | |
|----------------|----------|--------|---------|----------------|---------|-----------|-------------|-------|
| | Total | Female | %Female | Pre-school | Primary | Secondary | Cook-Is | %CIs. |
| Northern Group | 33 | 24 | 73 | 4 | 17 | 12 | 31 | 94 |
| Rarotonga | 169 | 120 | 71 | 14 | 80 | 75 | 132 | 78 |
| Southern Group | 83 | 66 | 80 | 7 | 39 | 37 | 77 | 93 |

| ISLAND | Teachers | | | Teaching Level | | | Nationality | |
|------------|----------|--------|---------|----------------|---------|-----------|-------------|-------|
| | Total | Female | %Female | Pre-school | Primary | Secondary | Cook-Is | %CIs. |
| Aitutaki | 36 | 28 | 78 | 3 | 18 | 15 | 35 | 97 |
| Atiu | 12 | 9 | 75 | 1 | 5 | 6 | 10 | 83 |
| Mangaia | 18 | 12 | 67 | 1 | 9 | 8 | 16 | 89 |
| Manihiki | 8 | 7 | 88 | 1 | 4 | 3 | 8 | 100 |
| Mauke | 12 | 12 | 100 | 1 | 5 | 6 | 11 | 92 |
| Mitiaro | 5 | 5 | 100 | 1 | 2 | 2 | 5 | 100 |
| Nassau | 2 | 1 | 50 | 0 | 2 | 0 | 2 | 100 |
| Palmerston | 1 | 1 | 0 | 0 | 1 | 0 | 0 | 0 |
| Penrhyn | 8 | 6 | 75 | 1 | 2 | 5 | 7 | 88 |
| Pukapuka | 11 | 6 | 55 | 1 | 6 | 4 | 11 | 100 |
| Rakahanga | 3 | 3 | 100 | 1 | 2 | 0 | 3 | 100 |
| Rarotonga | 169 | 120 | 71 | 14 | 80 | 75 | 132 | 78 |

TEACHER QUALIFICATIONS

| STATUS | Total Teachers | No. of Teachers with | | No. of Teachers | | % Teachers (with) | |
|----------------|----------------|----------------------|------------|-----------------|-------------|-------------------|-----------|
| | | Degree | No Degree | Certified | Uncertified | Degree | Certified |
| Government | 230 | 45 | 185 | 219 | 11 | 20 | 95 |
| Non-government | 55 | 19 | 36 | 33 | 22 | 35 | 60 |
| Total | 285 | 64 | 221 | 252 | 33 | 22 | 88 |



| REGION | Total Teachers | No. of Teachers with | | No. of Teachers | | % Teachers (with) | |
|----------------|----------------|----------------------|-----------|-----------------|-------------|-------------------|-----------|
| | | Degree | No Degree | Certified | Uncertified | Degree | Certified |
| Northern Group | 33 | 5 | 28 | 27 | 6 | 15 | 82 |
| Rarotonga | 169 | 48 | 121 | 147 | 22 | 28 | 87 |
| Southern Group | 83 | 11 | 72 | 78 | 5 | 13 | 94 |

| ISLAND | Total Teachers | No. of Teachers with | | No. of Teachers | | % Teachers (with) | |
|------------|----------------|----------------------|-----------|-----------------|-------------|-------------------|-----------|
| | | Degree | No Degree | Certified | Uncertified | Degree | Certified |
| Aitutaki | 36 | 4 | 32 | 33 | 3 | 11 | 92 |
| Atiu | 12 | 2 | 10 | 12 | 0 | 17 | 100 |
| Mangaia | 18 | 3 | 15 | 18 | 0 | 17 | 100 |
| Manihiki | 8 | 2 | 6 | 6 | 2 | 25 | 75 |
| Mauke | 12 | 2 | 10 | 11 | 1 | 17 | 92 |
| Mitiaro | 5 | 0 | 5 | 4 | 1 | 0 | 80 |
| Nassau | 2 | 0 | 2 | 2 | 0 | 0 | 100 |
| Palmerston | 1 | 1 | 0 | 1 | 0 | 0 | 0 |
| Penrhyn | 8 | 1 | 7 | 7 | 1 | 13 | 88 |
| Pukapuka | 11 | 1 | 10 | 10 | 1 | 9 | 91 |
| Rakahanga | 3 | 0 | 3 | 1 | 2 | 0 | 33 |
| Rarotonga | 169 | 48 | 121 | 147 | 22 | 28 | 87 |

Note:

1. Certified teachers are those with a Teachers College Certificate or Diploma.

2. The number of teachers with degrees and certified to teach are as reported by Principals and are not derived from a file check of verified qualifications held by the Ministry of Education.

STUDENT : TEACHER RATIOS

| STATUS | Number of Teachers | | | Total Students | S : T RATIOS | | |
|----------------|--------------------|------------|------------|----------------|--------------|-------------|------------|
| | Male | Female | Total | | 2004 | 2003 | Change |
| Government | 61 | 169 | 230 | 3829 | 16.6 | 15.8 | 0.8 |
| Non-government | 14 | 41 | 55 | 802 | 14.6 | 14.8 | -0.2 |
| Total | 75 | 210 | 285 | 4631 | 16.2 | 15.6 | 0.6 |

| REGION | Number of Teachers | | | Total Students | S : T RATIOS | | |
|----------------|--------------------|------------|------------|----------------|--------------|-------------|------------|
| | Male | Female | Total | | 2004 | 2003 | Change |
| Northern Group | 9 | 24 | 33 | 557 | 16.9 | 16.7 | 0.2 |
| Rarotonga | 49 | 120 | 169 | 2847 | 16.8 | 16.4 | 0.4 |
| Southern Group | 17 | 66 | 83 | 1227 | 14.8 | 13.7 | 1.1 |
| Total | 75 | 210 | 285 | 4631 | 16.2 | 15.6 | 0.6 |

| ISLAND | Number of Teachers | | | Total Students | S : T RATIOS | | |
|--------------|--------------------|------------|------------|----------------|--------------|-------------|------------|
| | Male | Female | Total | | 2004 | 2003 | Change |
| Aitutaki | 8 | 28 | 36 | 570 | 15.8 | 14.4 | 1.4 |
| Atiu | 3 | 9 | 12 | 196 | 16.3 | 15.0 | 1.3 |
| Mangaia | 6 | 12 | 18 | 236 | 13.1 | 12.9 | 0.2 |
| Manihiki | 1 | 7 | 8 | 135 | 16.9 | 17.1 | -0.2 |
| Mauke | 0 | 12 | 12 | 152 | 12.7 | 11.6 | 1.1 |
| Mitiaro | 0 | 5 | 5 | 73 | 14.6 | 14.5 | 0.1 |
| Nassau | 1 | 1 | 2 | 35 | 17.5 | 14.0 | 3.5 |
| Palmerston | 0 | 1 | 1 | 26 | 0.0 | 0.0 | 0.0 |
| Penrhyn | 2 | 6 | 8 | 96 | 12.0 | 16.9 | -4.9 |
| Pukapuka | 5 | 6 | 11 | 233 | 21.2 | 17.3 | 3.9 |
| Rakahanga | 0 | 3 | 3 | 32 | 10.7 | 9.5 | 1.2 |
| Rarotonga | 49 | 120 | 169 | 2847 | 16.8 | 16.4 | 0.4 |
| Total | 75 | 210 | 285 | 4631 | 16.2 | 15.6 | 0.6 |

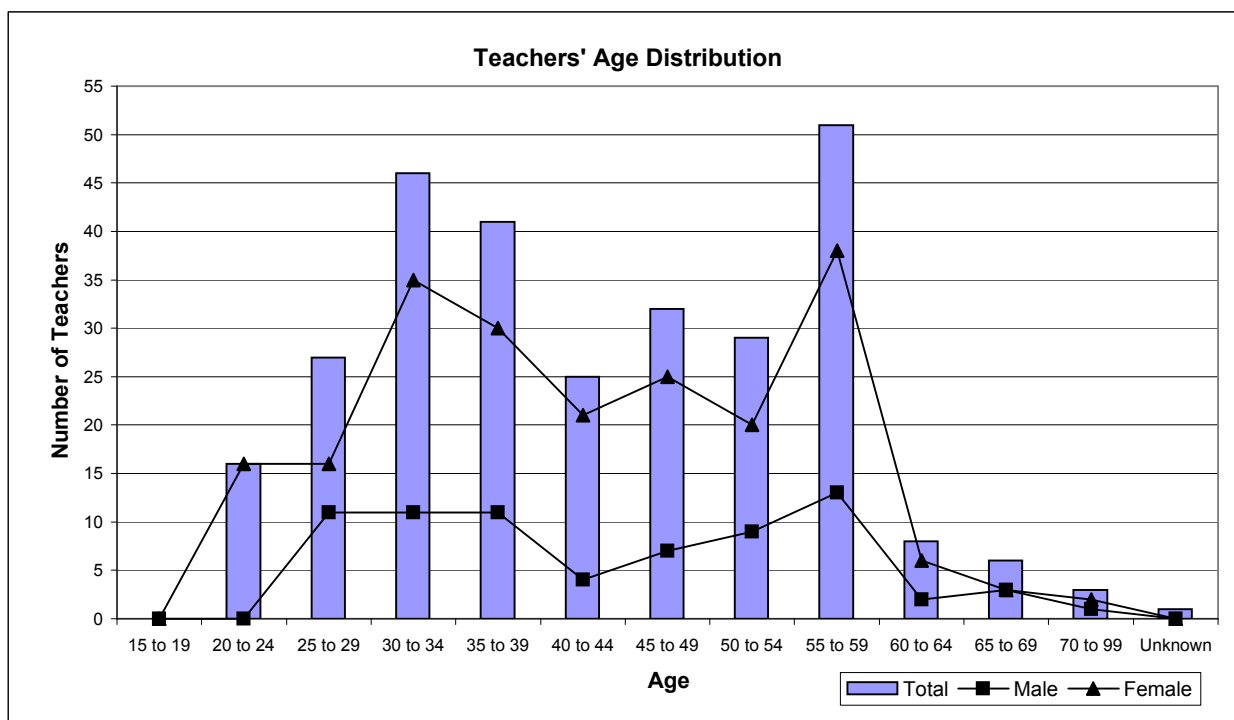
Note: Teacher numbers include principals and senior teachers.

STUDENT : TEACHER RATIOS (contd)

| SCHOOL | Teachers | | | | | | S : T RATIO | | | |
|--------------------------|-----------|------------|------------|-----------|------------|------------|-------------|-----------|-----------|-----------|
| | Pre-sch | Primary | Secondary | Male | Female | Total | Pre-sch | Primary | Secondary | Total |
| Aitutaki SDA | 1 | 3 | 0 | 0 | 4 | 4 | 10 | 19 | - | 17 |
| Araura College | 0 | 0 | 15 | 7 | 8 | 15 | - | - | 17 | 17 |
| Araura Primary | 1 | 10 | 0 | 1 | 10 | 11 | 26 | 14 | - | 15 |
| Arurangi Primary School | 1 | 7 | 2 | 2 | 8 | 10 | 12 | 17 | 19 | 17 |
| Avarua Primary | 2 | 18 | 5 | 5 | 20 | 25 | 38 | 19 | 24 | 21 |
| Avatea Primary | 0 | 16 | 4 | 3 | 17 | 20 | - | 19 | 26 | 20 |
| Blackrock Pre-school | 2 | 0 | 0 | 0 | 2 | 2 | 13 | - | - | 13 |
| Enuamanu School | 1 | 5 | 6 | 3 | 9 | 12 | 23 | 19 | 13 | 16 |
| Imanuela Akademia School | 0 | 3 | 1 | 1 | 3 | 4 | - | 10 | 21 | 13 |
| Ivirua Primary | 0 | 3 | 0 | 1 | 2 | 3 | - | 8 | - | 8 |
| Lucky Primary | 0 | 1 | 0 | 0 | 1 | 1 | - | 13 | - | 26 |
| Mangaia School | 1 | 5 | 8 | 4 | 10 | 14 | 10 | 16 | 13 | 14 |
| Mauke School | 0 | 2 | 5 | 0 | 7 | 7 | - | 16 | 12 | 15 |
| Mitiaro High School | 1 | 2 | 2 | 0 | 5 | 5 | 7 | 23 | 11 | 15 |
| Nassau Primary | 0 | 2 | 0 | 1 | 1 | 2 | - | 8 | - | 18 |
| Nikao Primary | 2 | 6 | 1 | 1 | 8 | 9 | 17 | 17 | 25 | 18 |
| Nukutere College | 0 | 0 | 12 | 7 | 5 | 12 | - | - | 14 | 14 |
| Omoka High School | 1 | 1 | 4 | 1 | 5 | 6 | 12 | 42 | 7 | 13 |
| Papaaroa College | 0 | 3 | 3 | 2 | 4 | 6 | - | 20 | 10 | 15 |
| Pukapuka High School | 1 | 6 | 4 | 5 | 6 | 11 | 47 | 19 | 18 | 21 |
| Rakahanga High school | 1 | 2 | 0 | 0 | 3 | 3 | 5 | 9 | - | 11 |
| Rutaki Primary | 1 | 2 | 0 | 3 | 0 | 3 | 16 | 16 | - | 16 |
| St Joseph's Primary | 1 | 8 | 0 | 2 | 7 | 9 | 22 | 20 | - | 21 |
| St Mary's Primary | 1 | 3 | 1 | 0 | 5 | 5 | 3 | 9 | 15 | 9 |
| Takitumu Primary | 2 | 8 | 0 | 1 | 9 | 10 | 27 | 16 | - | 18 |
| Tamarua Primary | 0 | 1 | 0 | 1 | 0 | 1 | - | 16 | - | 18 |
| Tauhunu High School | 1 | 2 | 1 | 0 | 4 | 4 | 12 | 15 | 34 | 19 |
| Tereora College | 0 | 0 | 34 | 15 | 19 | 34 | - | - | 15 | 15 |
| Tetautua Primary | 0 | 1 | 1 | 1 | 1 | 2 | - | 9 | 5 | 8 |
| Te-Uki-Ou School | 3 | 9 | 1 | 2 | 11 | 13 | 10 | 13 | 23 | 13 |
| Titikaveka College | 0 | 0 | 12 | 5 | 7 | 12 | - | - | 13 | 13 |
| Tukao Primary | 0 | 2 | 2 | 1 | 3 | 4 | - | 15 | 13 | 15 |
| Vaitau Primary | 1 | 5 | 0 | 0 | 6 | 6 | 12 | 13 | - | 13 |
| Total | 25 | 136 | 124 | 75 | 210 | 285 | 19 | 16 | 16 | 16 |

AGE DISTRIBUTION OF TEACHERS

| Age Range | Total | Male | Female | %Female | Total % |
|--------------|------------|-----------|------------|-----------|---------|
| 15 to 19 | 0 | 0 | 0 | 0 | 0 |
| 20 to 24 | 16 | 0 | 16 | 100 | 8 |
| 25 to 29 | 27 | 11 | 16 | 59 | 8 |
| 30 to 34 | 46 | 11 | 35 | 76 | 17 |
| 35 to 39 | 41 | 11 | 30 | 73 | 14 |
| 40 to 44 | 25 | 4 | 21 | 84 | 10 |
| 45 to 49 | 32 | 7 | 25 | 78 | 12 |
| 50 to 54 | 29 | 9 | 20 | 69 | 9 |
| 55 to 59 | 51 | 13 | 38 | 75 | 18 |
| 60 to 64 | 8 | 2 | 6 | 75 | 3 |
| 65 to 69 | 6 | 3 | 3 | 50 | 1 |
| 70 to 99 | 3 | 1 | 2 | 67 | 1 |
| Unknown | 1 | 0 | 0 | 0 | 0 |
| Total | 285 | 72 | 212 | 74 | |



2003/2004 TEACHER COMPARISONS

| Teachers | 2003 | 2004 | Change | % Change |
|-----------------------|------|------|--------|----------|
| Total | 296 | 285 | -11 | -4 |
| Male | 76 | 75 | -1 | -1 |
| Female | 220 | 210 | -10 | -5 |
| Cook Islanders | 252 | 240 | -12 | -5 |
| Non-Cook Islanders | 44 | 45 | 1 | 2 |
| Trained Teachers Cert | 257 | 252 | -5 | -2 |
| Tchrs with a Degree | 59 | 64 | 5 | 8 |

SCHOOL BUILDINGS AND FACILITIES

SCHOOL CAPACITY

| STATUS | Schools | Students | Teachers | Classrooms | S:C Ratio |
|----------------|-----------|-------------|------------|------------|-----------|
| Government | 25 | 3829 | 230 | 247 | 16 |
| Non-government | 8 | 802 | 55 | 48 | 17 |
| Total | 33 | 4631 | 285 | 295 | 16 |

Note: Classrooms exclude specialist rooms.

S:C Ratio - number of students per class.

| REGION | Schools | Students | Teachers | Classrooms | S:C Ratio |
|----------------|---------|----------|----------|------------|-----------|
| Northern Group | 8 | 557 | 33 | 38 | 15 |
| Rarotonga | 14 | 2847 | 169 | 154 | 18 |
| Southern Group | 11 | 1227 | 83 | 103 | 12 |

| ISLAND | Schools | Students | Teachers | Classrooms | S:C Ratio |
|------------|---------|----------|----------|------------|-----------|
| Aitutaki | 4 | 570 | 36 | 36 | 16 |
| Atiu | 1 | 196 | 12 | 20 | 10 |
| Mangaia | 3 | 236 | 18 | 26 | 9 |
| Manihiki | 2 | 135 | 8 | 9 | 15 |
| Mauke | 2 | 152 | 12 | 14 | 11 |
| Mitiaro | 1 | 73 | 5 | 7 | 10 |
| Nassau | 1 | 35 | 2 | 2 | 18 |
| Palmerston | 1 | 26 | 1 | 1 | 26 |
| Penrhyn | 2 | 96 | 8 | 8 | 12 |
| Pukapuka | 1 | 233 | 11 | 12 | 19 |
| Rakahanga | 1 | 32 | 3 | 6 | 5 |
| Rarotonga | 14 | 2847 | 169 | 154 | 18 |

SELECTED BUILDINGS

| BUILDING | 2004 | | | | Changes from 2003 | | | |
|-------------|-------|------|-----------|------------|-------------------|------|-----------|------------|
| | Total | Good | To Repair | Area(sq.m) | Total | Good | To Repair | Area(sq.m) |
| Classroom | 295 | 163 | 132 | 23900 | 3 | 22 | -19 | 1078 |
| Office | 59 | 39 | 20 | 1484 | 1 | 4 | -3 | -91 |
| Workshop | 12 | 5 | 7 | 2486 | 0 | 1 | -1 | -66 |
| Home/Ec. | 13 | 6 | 7 | 1398 | 0 | 2 | -2 | 0 |
| Science Lab | 16 | 8 | 8 | 1477 | 0 | 5 | -5 | -248 |
| Hall | 11 | 7 | 4 | 4029 | 2 | 3 | -1 | -995 |
| Staffroom | 24 | 15 | 9 | 2035 | -1 | 1 | -2 | -566 |
| Library | 34 | 23 | 11 | 3232 | 0 | -3 | 3 | -449 |

SELECTED APPARATUS IN ALL SCHOOLS

| APPARATUS | 2003 | 2004 | Change |
|--------------------|------|------|--------|
| Duplicator | 8 | 8 | 0 |
| Photocopier | 45 | 48 | 3 |
| Typewriter | 45 | 46 | 1 |
| Computer | 251 | 259 | 8 |
| Radio | 67 | 62 | -5 |
| Television/Video | 24 | 30 | 6 |
| Overhead projector | 25 | 25 | 0 |

SELECTED FURNITURE IN ALL SCHOOLS

| Type of Furniture | 2004 | | | Change from 2003 | | |
|-------------------|-------|------|-----------|------------------|------|-----------|
| | Total | Good | To Repair | Total | Good | To Repair |
| Desk/Table | 4141 | 3703 | 438 | 98 | 27 | 71 |
| Chair/Form | 5129 | 4344 | 785 | -8 | -191 | 183 |
| Workbench | 392 | 329 | 63 | 17 | 26 | -9 |
| Blackboard | 433 | 357 | 76 | 1 | -14 | 15 |